

The Award of Probleblad 2007-2009 (Studies)

In the issues of magazine Probleblad 2007-2008 were published 28 original studies of 21 composers. Unfortunately, defects in some studies have been found out:

- 1.E.Espen – E235 (Kb8/Kd6) – dual: 3.Sa4 Sa3 4.Sd4+ Kd5 5.Kxb7 ect, wins.
- 2.E.Espen – E244 (Kh1/Kh5) – dual: 15.Kg3 d5 16.Kf4 etc, wins.
3. G.Regniers - E243 (Kc1/Ke5) – dual: 5.Qxg5+-.
4. S.Borodavkin - E246 (Kf5/Kh7) – no solution: 7...h3! 8.Re8 Qxe8 9.Bxe8 Kxe8 etc, draws.
5. L.Topko - (E251 (Ke8/Kg6) – dual: 3.Rxg5 Qg7 4.Rh8 etc, draws.

Also, some studies have full or serious anticipations:

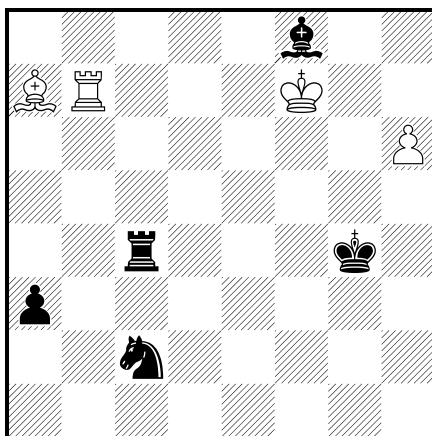
1. G.Josten - E229 (Ka1/Kc6) – was published in Kalandadze 70 JT, 2006
2. N.Mojosovski – E241 (Kf5/Kg8) – was published in “politika”, 1967
3. J.Vandiest – E249 (Kb1/Kf7) – was published in ‘Europe Eches’, 1977

From the remained studies 9 works are selected for the award. The others have not got in award because of weakness of the contents.

E250

J.Rusinek

Prize, Probleblad 2007-2008, 1



Draw

1.h7 Bg7

1...a2 2.h8Q a1Q 3.Qxa1 Sxa1 4.Kxf8=

2.Kxg7 a2 3.Bd4

3.h8Q? a1Q+ 4.Kh7 Qh1+-+

3...Sxd4

3...Rxd4 4.Ra7 Rd7+! 5.Rxd7 a1Q+ 6.Kg8 Qa8+ 7.Kg7 Qa1+ 8.Kg8 positional draw

4.Ra7

4.h8Q? a1Q 5.Qg8 Rc5! 6.Kh7+ Rg5 7.Qc8+ Kh4--

4...Rc7+! 5.Rxc7 Sf5+

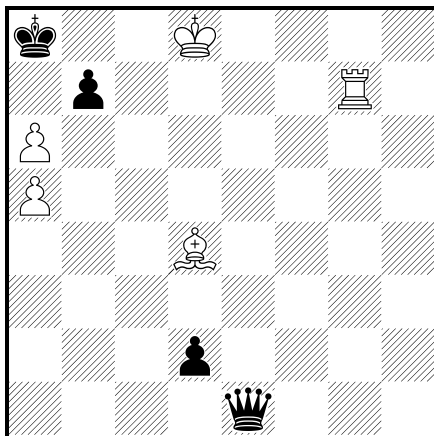
5...a1Q 6.h8Q Se6+ 7.Kg8 Qa8+ 8.Kh7 Sg5+ 9.Kg7 Qa1+ 10.Kg8 Qa2+ 11.Kf8 Qa3+ 12.Re7=] **6.Kg8! Sh6+ 7.Kh8! a1Q+ 8.Rg7+ Kf4 =.**

The original model stalemate with pin of wR and block of wP. Additional variants 3...Rxd4 and 5...a1Q deserve also attention. It would be desirable to see similar works of the known master often

E233

Y.Afek

1.hm Probleblad 2007-2008



Win

1.Rg8

1.axb7+!?! Kb8--+] **1...Qg3!** [1...Qe6 2.Kc7++-

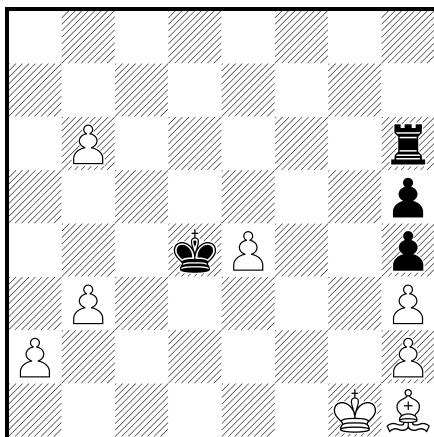
2.Rxg3 d1Q 3.Rg8! Qxd4+ 4.Kc7+ Ka7 5.Ra8+! Kxa8 6.axb7+ Ka7 7.b8Q+ Ka6 8.Qb6+ Qxb6+ 9.axb6+-

The final is known, but play deserves some attention.

E238

G.Hoerning

2.hm Probleblad 2007-2008



Win

1.b7 Rb6

1...Rh8 2.a4 Kc5 (2...Ke5 3.a5 Kd6 4.e5+ Kc7 5.e6 Rh6 6.Bd5 Rg6+ 7.Kf2 Rg5 8.Bc6) 3.a5 Kb5 4.b4 Ka6 5.e5

2.e5 Kxe5 3.a4

3.Kf2? Kd6 4.Ke3 Kc7=

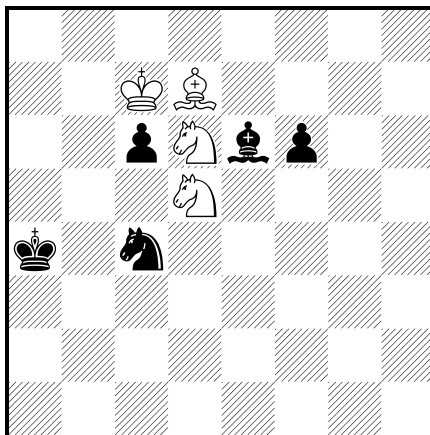
3...Kd6 4.a5 Kc7 5.axb6+ Kb8 6.Kg2!+-

Motive of this study not new, however the author has brought fresh nuances in play.

E231

I.Vandecasteele

1.c Probleblad 2007-2008,



Win

1.Sc3+

1.Bxc6+? Kb3 2.Sxf6 Sxd6=

1...Kb4

1...Kb3 2.Bxe6 Kxc3 3.Sxc4+-

2.Sa2+ Kc5

2...Ka3 3.Bxe6 Kxa2 4.Bxc4+-

3.Sb7+

3.Se4+? Kd5 4.Bxc6+ Ke5=

3...Kd5 4.Sb4+ Ke5 5.Sxc6+ Kd5

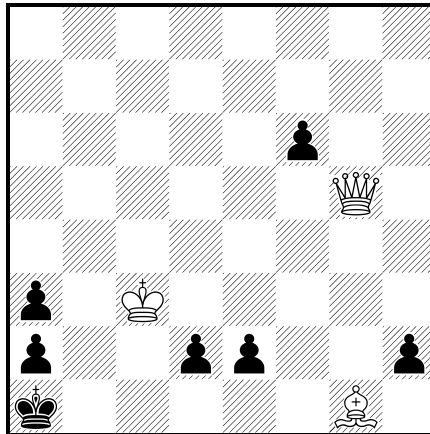
5...Kf5 6.Sd4+-

6.Se7+ Ke5 7.Sg6+ Kf5 8.Sh4+ Ke5

8...Kg4 9.Bxe6+ Kxh4 10.Bxc4+-] **9.Sf3+ Kd5 10.Bc6#**

The interesting route of a wS comes to the mate. However, the mate picture is created artificial in an initial position.

E236
I.Vandecasteele
 2.c Probleblad 2007-200



Win

1.Bd4

1.Qxf6!? d1Q 2.Kc4+ Kb1 3.Qb6+ Kc1 4.Be3+ Qd2 5.Bxd2+ Kxd2=

1...d1Q 2.Qh4 f5

2...Kb1 3.Qe4+ Ka1 4.Bxf6 Qf1 5.Be5 Qc1+ 6.Kb3+ Qb2+ 7.Bxb2+ axb2 8.Qd4+-

3.Bg7!

3.Be5!? e1Q+ 4.Qxe1 Qxe1+-; 3.Bf6!? f4=

3...f4 4.Qe7 h1Q

4...e1Q+ 5.Qxe1 Qxe1+ 6.Kc2+-

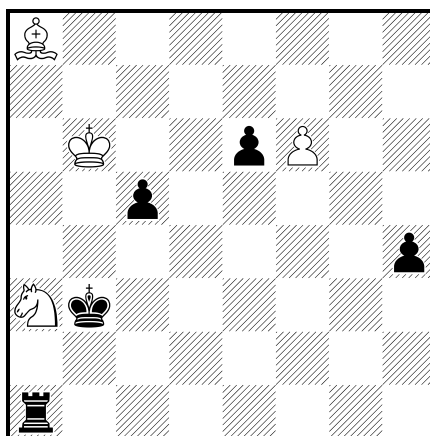
5.Kc4+ Kb1 6.Qb4+ Qb3+ 7.Qxb3+ Kc1 8.Qc3+

8.Qxa3+!? Kd1 9.Qd6+ Ke1=

8...Kd1 9.Qa1+-

Stated estimation has deserved that during the six moves all pieces have remained on a board.

E242
E.Zimmer
 3.c Probleblad 2007-2008



Win

1.Bf3!

1.Bg2? Ra2 2.f7 Rf2 3.Sb5 Rxf7 4.Sd6 Rg7 5.Bh3 c4+-

1...Rf1

1...Rxa3 2.f7

2.Sc4! Kxc4

2...Rxf3 3.Sd2+-; 2...Kc3 3.Se5 Rb1+ 4.Kxc5 Rb4 5.Sg6+-

3.Be2+ Kd5 4.Bxf1 Kd6!

4...e5 5.f7

5.Kb5! e5 6.Bh3

6.Bc4? h3 7.f7 Ke7=

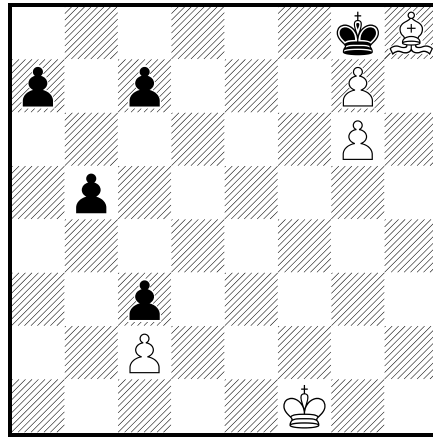
6...e4 7.Kc4+-

Not so obvious introduction, but the final play does not touch soul...

E234

V.Kovalenko

Spec. prize Probleblad 2007-2008



Draw

1.Ke2 b4 2.Kd3

2.Kd1!? c5+ (2...a5+)

2...a5 3.Kc4 c6! 4.Kb3 c5 5.Ka2

5.Kc4!? a4+

5...c4 6.Kb1!

try 6.Ka1!? b3 7.Kb1 a4 8.Kc1 a3 9.Kb1 a2+ 10.Ka1 bxc2 11.Kxa2 c1R+ (11...c1Q stalemate) **6...b3 7.Kc1**

a4 8.Kb1

8.cxb3!? cxb3 9.Kb1 c2+--+] **8...a3** [8...b2 9.Ka2 a3 10.Kb1 a2+ 11.Kxa2=

9.cxb3 cxb3 10.Ka1! c2 /a2 stalemate

10...b2+ 11.Kb1 c2+ 12.Kxc2 a2 13.Kxb2 a1Q+ 14.Kxa1

The author had published earlier such idea, but he has enriched the idea with some nuances, including the interesting try.

1...Ra3 2.Kd2 g3 3.Rg2 g3h2 4.Rxh2 Bf7 5.Bb1=

2.Sxg4!

2.Rg2? g3+ 3.Sf3 Rh2-+

2...Bxg4+ 3.Kd2

3.Ke1 Rh1+ 4.Kd2

3...Rh1 4.Kc3 b1Q 5.Bxb1 Rxb1 6.a4! bxa4 7.Ra2 Bd1 8.Ra1! Rxa1

8...Rb3+ 9.Kd2=; 8...Bc2 9.Rxb1 Bxb1 10.Kb2=

9.Kb2= .

All that is visible after six move repeatedly was realized. In the introduction there are some, small innovations.

Iuri Akobia – International judge of FIDE for the studies

Tbilisi, Georgia

21.12.09