

Award 3°Maroc Echecs 2013
Section Study
By Richard Becker

I received from Abdelaziz 15 studies without their composer's names. From these I selected the five most artistic for inclusion in the award. Unfortunately, two of the five proved to be incorrect. [Kh2/Kc1], 12...b2! and Black wins. [Kh2/Ke8], 3.Kh3 hxg4+ 4.Kg3 g5 5.Kxg4 a5 6.Kf5 seems to be a dual win, but if not, the study is still eliminated due to anticipation by Kovalenko, 1st prize, Pacific Ocean Komsomolets Ty. 1987.

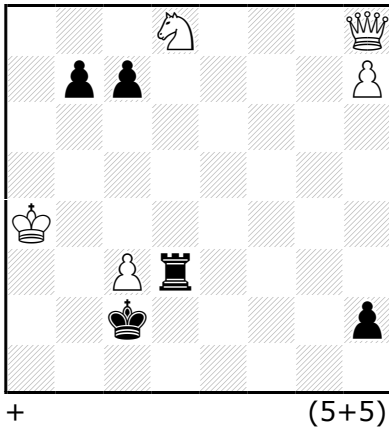
Some of the excluded studies had interesting points, but they do not appear in the award because they exhibited inartistic introductory play. These introductions contained a lot of analysis and many exchanges of material, but none of them were interesting or thematic.

I consider such introductions to be a violation of the fundamental principle of economy. In the other genres, composers agonize for weeks to find a way to eliminate a single pawn from their settings. Contrast this with studies, where some practitioners add many unnecessary units just to make their solutions longer.

Participants :

Akobia Iuri (1*,8) Garcia .M.G (1*,4*) , Hlinka.M (2*) , Kekely.L (2*) , Skripnik (3) ,Krug.P (4*), Kovalenko.V (5,6) , Pallier.A (7,16), Arestov.P (9,10),Delobel.B (11,12), Shpakovsky.A (13,14) , Afek.Y (15*) and Minski.M. (15*).

**15-Yochanan AFEK
Martin MINSKI
3° Maroc Echecs 2013
Prize**



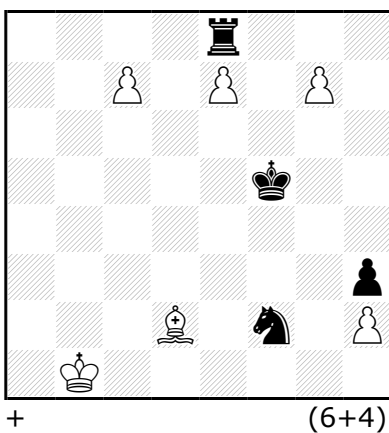
The winning study is of the logical type. The Knight sacrifice 1.Nc6! changes the position so that later the skewer 5.Qa1+ can succeed. This is not a "modern thematic try" in the strictest sense, because there are two differences between the critical positions in the main line and in the thematic try; namely, the presence of the white Knight on d8 and the shift in the position of the b-pawn. A requirement of a modern thematic try is that it has only a single, small difference compared with the main line. The logic in this study is more akin to what is sometimes seen in moreovers, in which a white unit moves from a remote square and is sacrificed to decoy a black unit. Such a sacrifice can be a weak expression of logic in a moreover if it feels like an afterthought, added in an effort to create one more layer of "foreplan". In this study, the sacrifice feels built in and organic to the theme. A second sacrifice on the fifth move, this time the Queen, helps lift the study to a good level of artistry.

1.Nc6! [Thematic try 1.Qg8? h1Q 2.Qa2+ Kxc3 3.h8Q Qxh8 and now 4.Qa1+? loses to 4...Kc4!

5.Qxh8 Ra3 mate. Try 1.Qf8? h1Q 2.h8Q Qa1+ 3.Qa3 b5+! 4.Kb4 c5+! -+] 1...bxc6 2.Qg8! [2.Qf8?

h1Q 3.h8Q Qd5! 4.Qh2+ Rd2 5.Qh7+ Rd3 6.Qf2+ Kxc3 7.Qe1+ Kc2 8.Qe2+ Kc3 =] 2...h1 3.Qa2+ Kxc3 4.h8Q+ Rd4+ [Now 4...Qxh8 5.Qa1+ Kc4 Qxh8 wins] 5.Qc4+! Kxc4 6.Qxh1 Kc5+ 7.Ka5! Wins.

**Bernard DELOBEL
3° Maroc Echecs 2013
Honorable Mention**

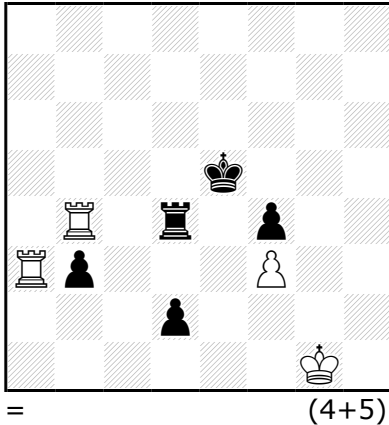


The next study is in the classical style. It is competently constructed and has a pleasant mix of known elements. Good humor is on display here, particularly in the symmetrical try. But the study does not reach the level of a prize, due mainly to the dual on move 11. While the white King's dual on move 7 is only minor, the white Bishop's dual is more serious, as it happens at the climax of the study.

1.Ba5! [An amusing try is 1.Bh6? Rg8 2.c8Q+ Rxc8 3.g8Q Rxc8 4.Bf8 Rg1+ 5.Kc2 Re1 -+]

1...Rc8 2.g8Q Rxc8 3.c8Q+ Rxc8 4.Bd8 Rb8+ 5.Ka2! [The King must avoid 'mined' squares. 5.Kc2? Rc8+ 6.Kb3 Rc3+! 7.Kxc3 Ne4+ =] 5...Ra8+ 6.Kb3 Rb8+ 7.Ka4(Ka3) Ra8+ 8.Kb4 [8.Kb5? Ne4 -+] 8...Rb8+ 9.Ka5 Rb5+ 10.Kxb5 Ne4 11.Bb6(Ba5)! [11.ebN? Nd2! =] 11...Kf6 12.e8N+ wins.

1- Iuri AKOBIA
Mario Guido GARCIA
3° Maroc Echecs 2013
Commendation



The final study is a commendable example of the analytical type. It isn't easy to see all the subtle points and tempo play that will allow White to hold the position. I find the study mildly interesting, but not memorable due to a lack of high points (sacrifices, stalemates, surprise moves, etc.). Also, the exchange of the Rook for the pawn at the beginning does not make for an optimal introduction.

- 1.Ra5+! [1.Rb5+? Kd6 2.Ra6+ Kc7 -+] 1...Rd5 2.Ra1 d1Q+
 3.Rxd1 Rxd1+ 4.Kf2 Rd2+
 5.Ke1 Rd3 [5...Rb2 6.Kd1 Rb1+ 7.Kd2 b2 8.Kc3! (8.Kc2? Rf1
 9.Kxb2 Rxf3 -+) 8...Rf1
 9.Rb5+! Kf6 10.Kxb2 Rxf3 11.Kc2 =] 6.Ke2 Re3+ 7.Kf2 Rd3
 8.Ke2 Rc3 9.Re4+ Kf5 10.Ra4!
 [10.Rb4? Re3+ 11.Kf2 Ke5 -+] 10...Re3+ 11.Kf2 Rd3 12.Ke2
 Rc3 13.Ra5+! [13.Rd4? Rc2+
 14.Kd3 Rf2 15.Rd5+ Ke6 16.Rb5 Rxf3+ 17.Ke4 Rh3! 18.Kxf4
 Kd6 -+] 13...Ke6 14.Ra4 Kf5
 [14...b2 15.Rb4 Rc2+ 16.Kd3 Rh2 17.Rb5 Rf2 18.Ke4 Re2+
 19.Kxf4 =] 15.Ra5+ Kf6 16.Ra4 =

Richard Becker
 Oregon City, USA
 November, 2013