

October 1971

---

**Engineer PAUL FARAGO - Honoured Master of Sport  
is not longer among us.....**

On 1.xii.70, the news of the death of Engineer Paul Farago saddened all those who had known and admired him for his profound and original studies - studies which for three decades brought his country famous successes in important international competitions.

This was a great loss for Romanian chess; it was Paul Farago who lifted Romanian problemists to unexpected heights, who discovered new ways of enriching traditional methods especially by strengthening Black's play so that points of great subtlety were introduced.

Born in Hungary in the village of Pereg on 4.iv.1886, he graduated from the high school in Kecskemet and the Polytechnic in Budapest as a geodetic engineer and settled down in Cluj, Romania in 1910.

It was at Cluj that I made his acquaintance, four decades later, when as a young study-composer I had the opportunity of visiting him and all those who had known and admired him for his profound and learning something from the craftsmanship of this master whom I greatly admired. Since then I visited him as often as I could, and the first thing I learned was that "a good ending is the realization of an original idea, aesthetic and profound, in an economic position, with a solution rich in points and surprises...."

His first study was published in 1899, at the age of 13! After several smaller successes (2nd prize in the International Competition of the Romanian Chess Review in 1935 and 1st prize in the same year in the competition organized in memory of W. Pauly), in 1936 the Gold Medal of the Munich Olympic Games was awarded to him, giving him the highest place in the international hierarchy of chess compositions. His career continued with a series of successes among which it is enough to quote: 1st prize Dutch Chess Federation's Competition 1937; 3rd prize Shakhmaty Soviet Union 1939; 1st prizes Suomen Shakki, Finland 1944, 1946 and 1948; 1st prizes Dutch Chess Federation's Competition 1946, 1947 and 1951; 1st and 2nd prizes at the Enroque Competition, Argentine 1947/1948; 1st prize of the tourney in memory of L. Centurini, Italy 1952; and 3rd prize at the Olympic Games Helsinki 1952.

In retirement, Paul Farago devoted himself passionately and entirely to study composition, a domain in which he played an important part, rousing real emulation among Romanian study composers; a great number of now well known young chess players served their apprenticeship round him.

In xi.36 he took over the study section of the "Romanian Chess Review" which was under his guidance till the end of his life. For more than a decade he directed the study section of the Hungarian "Magyar Sakkvilag" collaborating at the same time with a great number of other chess reviews.

In appreciation of his activity in the domain of artistic chess he was awarded the title "Master of Sport" in 1955 and in 1961 he became "Honoured Master of Sport".



His well known competence caused him to be invited to judge many international and national competitions and in 1960 he became "International F.I.D.E. Judge" for studies.

It is very difficult to portray such a complex personality as that of Paul Farago. For those who did not know him the advice to read his book "New Ideas in Artistic Chess" which appeared in Romanian and Hungarian, but not in English, is more than advice, it is a duty. In this book, there are more than 150 studies composed by this great master who gained 16 first prizes, and 50 other prizes and mentions in major competitions. His studies are characterised by a profound artistic content and extraordinary difficulty, witness the mottoes Labyrinth, Sphinx, etc. The Labyrinth (F14 below) remained unsolved after 20 years. In the author's own words, "Engineer A. Nichita investigated this study quite deeply, demonstrating a draw in 150 variations, but Black's best play was not among these. The real solution is often approached and passed by, but never revealed".

To illustrate his search for the unexpected and unconventional, I should like to mention his short stories which have not only a chess theme, but a chess content too, and his conception of studies within a study, or 'framed' studies.

Chess concerned him all his life. In his last minutes, he was playing on his pocket chess board from which he was never separated, not even in his grave.

From the works of our late Master, Paul Farago, we quote some of his most outstanding compositions.

**Eng. George Teodoru**

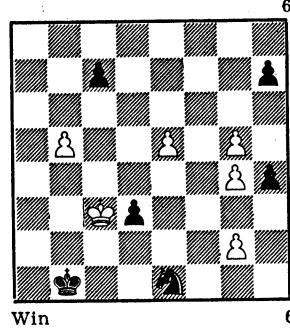
Member of the Romanian Chess  
Federation Bureau

President of the Central  
Committee of Chess Studies and Problems

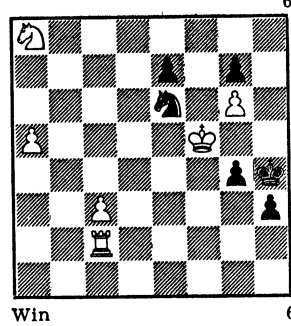
(My thanks to Richard Harman and to John Beasley for assistance in the preparation of the material. The figures in brackets after the composer's name at the head of each diagram refer to the book 'Idei Noi in Sahul Artistic', where further analyses or details may be found. AJR)

The closing date for the Farago Memorial Tourney (see EG24, p. 239) has been extended for onme month. It is now 31.i.72.

**F.1** P. Farago (64)  
=1/2 Pr.,  
Tidschrift KNSB, 1946



**F.2** P. Farago (65)  
=1/2 Pr.,  
Tidschrift KNSB, 1946

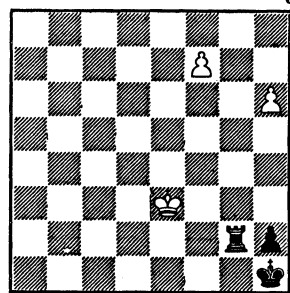


**F.1:** 1. b6/i cb 2. g6/ii hg/iii 3. e6 Kc1 4. e7 d2 5. e8Q Sc2/iv 6. Qxg6 d1Q/v 7. Qh6† Kbl 8. Qxb6† wins. i) 1. Kd2? Sf3† 2. gf h3 3. e6 h2 4. e7 h1Q 5. e8Q Qxf3 draw, or 1. e6? Kc1 2. e7 d2 3. e8Q d1Q 4. Qe3† Kbl draw, or 1. g6? Kc1 2. gh d2 3. h8Q d1Q 4. Qh6† Kbl 5. Qg6† Sc2 6. Qe4 Qc1 7. e6/vi Qa3† 8. Kc4 Qb4† 9. Kd3 Qxb5† 10. Kd2 Qg5† 11. Kd1 Qxg4† draw. ii) 2. e6? Kc1 3. e7 d2 4. e8Q Sc2 5. Qb5/vii d1S† 6. Kd3 Sf2† draw. iii) 2. . . Kc1 3. gh d2 4. h8Q Sc2 5. Qh6 wins. iv) 5. . . d1Q 6. Qe3† Kbl 7. Qxb6† wins. v) 6. . . Sb4 7. Qh6 Sa2† 8. Kd3 Sb4† 9. Ke2 wins. vi) 7. g5 Qa3† 8. Kc4 Qa4† 9. Kd3 Qxb5† 10. Kd2 Qb2 11. g6 Qc1† draw. vii) 5. any other d1Q draw.

**F.2:** 1. Rb2/i g3/ii 2. Rb4† Sf4 3. Kxf4/iii h2 4. Kf3†/iv Kh3 5. Rh4†/v Kxh4 6. Kg2 wins. i) 1. a6? g3 2. a7 g2 3. Kxe6 g1Q 4. Ra2 Qxg6†. ii) 1. . . Kg3 2. Kxe6. Or 1. . . Sf8 2. Sc7 g3 3. Rb4† Kh5 4. Se6 Sxe6 5. Rb8 Sf8 6. Rxf8 e6† 7. Kf4 g2 8. Rh8† Kxg6 9. Rxh3 e5† 10. Kf3 g1S† 11. Kg2(g3) wins. Or 1. . . Sc5 2. Sc7 e5 3. Sd5 Sd3 4. Rb8 Sf2 5. Se3 Kg3 6. a6 wins. iii) 3. Rxf4†? Kh5 4. Rd4 g2 5. Rd8 e6† 6. K- g1Q wins. iv) 4. Rb8? e5† 5. Kxe5 Kg5 6. Rh8 g2 wins. v) 5. Rb1? e5 6. Sc7 e4† 7. Kf4 g2 8. Rb8 g1Q wins.

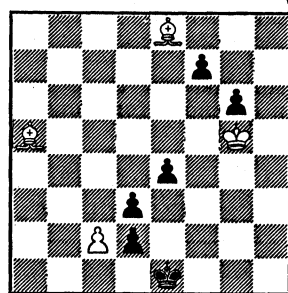
**F.3:** 1. h7/i Rg3†/ii 2. Kd4/iii Rg4†/iv 3. Ke5 Rg5†/v 4. Kf4 Rh5 5. f8Q Kg2(Kg1) 6. h8Q h1Q 7. Qa8† wins. i) 1. f8Q? Kg1 2. h7 h1Q 3. h8Q Rg3† 4. Kd4 Qc6 draw. ii) 1. . . Kg1 2. h8Q wins, or 1. . . Rf2 2. h8Q Rxf7 3. Qa8† Kg1 4. Qg8† K- 5. Qxf7 wins, or 1. . . Rg8 2. fgB wins. iii) 2. Kf4? Kg2 3. h8Q Rf3† 4. Ke4 Rxf7 5. Qg8† Kh3 draw, or 2. Ke4? Rg8 3. fgB Kg1 draw, or 2. Kf2? Rg2† 3. Kf3 Rg8 daw. iv) 2. . . Kg2 3. h8Q/vi Rf3/vii 4. Qg7†/viii Kf2 5. Qh6 Kg2 6. Qg6† Kf2 7. Qh5 Kg2 8. Qxf3† Kxf3 9. f8Q† wins, or 2. . . Rh3 3. f8Q Kg2 4. h8Q h1Q 5. Qa8†

F.3 P. Farago (53)  
1st Pr.,  
Suomen Shakki, 1946



Win 3

F.5 P. Farago (44)  
1st Pr.,  
Enroque!! 1947-48



Win 4

wins, or 2. ... Rf3 3. h8Q Rxf7 4. Qa8† Kg1 5. Qg8† wins. v) 3. ... Rh4 4. f8Q Kg2 5. Qg8† Kh3 6. Qe6† Kg2 7. Qg6† Kh3 8. Qf5† Kg3 9. Qg5† wins. vi) 3. f8Q? h1Q 4. Qa8† Rf3 draw. vii) 3. ... Rh3 4. f8Q Rxh8 5. Qg7† wins. viii) 4. f8Q? Rxf8 5. Qg7† Kh3 draw.

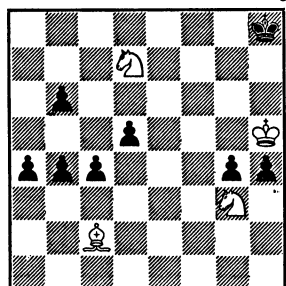
F.4: See EG9, p. 238, or (101).

F.5: 1. cd/i ed/ii 2. Kf6/iii Kd1 3. Bb4 Kc1/iv 4. Ba3† Kd1 5. Bd7 Kel 6. Bb4 Kd1 7. Fd6 Kel/v 8. Bg3† Kd1 9. Bh4 wins. i) 1. c4? Ke2 2. Ba4 e3 3. Kf4 g5† 4. Ke4 f5† 5. Kd4 f4 6. c5 f3 draw. ii) 1. ... e3 2. d4 Ke2 3. Ba4 Kd3 4. d5 e2 5. Bb5† wins. iii) 2. Bxf7? Kd1 3. Bb4 Kc1 4. Ba3† Kc2 draw, or 2. Kc4? Ke2 3. Bc6 g5† 4. Kg3 f5 5. Bf3† Kel 6. Bh5 g4 7. Kf4 Kd1 8. Ke3 Kc2 9. Bxd2 f4† draw, or 2. Bd7? Kd1 3. Bb4 f5 4. Kxg6 f4 draw. iv) 3. ... Kc2 4. Ba4† Kc1 5. Ba3† Kb1 6. Bd1 K- 7. Bb4 wins. v) 7. ... g5 8. Kxg5 f5 9. Be8 Kc1 10. Ba3† wins.

F.6: 1. Bh7/i Kxh7/ii 2. Sf5 Kh8/iii 3. Sf6 h3/iv 4. Kg6 -- 5. Sd6 wins. i) 1. Kh6? Kg8 2. Sh5/v Kf7 3. Bxa4 b3 4. Sxb6 g3 5. Sf4 g2 6. Sh3 Ke6 7. Kg5 Kd6 8. Kf4 Kc5 9. Sxd5 Kxd5 10. Ke3 b2 11. Bc2 Kc5 12. Kd2 Kb4 13. Sg1 Ka3 14. Bb1 Kb3 15. Kd1 c3 16. Sh3 c2† 17. Bxc2 Ka2 draw. ii) 1. ... Kg7 2. Sf5† Kf7 3. Bg8† Ke8 4. Sf6† Kf8/vi 5. Kg6 -- 6. Bf7 wins. iii) 2. ... Kg8 3. Kg6 -- 4. Sh6†(Se7†) wins, or 2. ... h3(c3) 3. Sf6† Kh8 4. Kg6 wins, or 2. ... g3(b3) 3. Sf6† Kh8 4. Kh6 wins. iv) 3. ... g3(b3) 4. Kh6 g2(b2) 5. Sd6 wins. v) 2. Sf5 g3 3. Sxh4 b3 4. Bh7† Kf7 draw, or 2. Ph7† Kf7 3. Sf5 b3 4. Bg8† Kxg8 5. Kg6 b2 draw. vi) 4. ... Kd8 5. Sxd5 g3 6. Sxh4 b5 7. Sxb4 Kd7 8. Kg4 Kd6 9. Kxg3 wins.

F.7: 1. e7 de/i 2. e8Q/ii e1Q†/iii 3. Qxe1 Rg2† 4. Kh1 Re2 5. Qg1/iv f2† 6. Bxd5 Re1 7. Qf1 Rxf1† 8. Kg2 Rcl/v 9. Kxf2 Kxh8 10. Sa2 draw. i) 1. ... fe 2. Kf2 e1Q† 3. Kxe1 d2† 4. Kd1 Bb3 5. Bd5 Rxc3† 6. Bxb3 Re3 7. Sxf7 draw, or 1. ... Rxc3? 2. e8Q d2 3. Qe5† f6 4. Qe7† Kxh8 5. Qxf6† Kh7 6. Qf5† Kh6 7. Qh5† Kg7 8. Qg5† wins. ii) 2. Kf2? e1Q† 3. Kxe1 f2† 4. Kd1 Rxc3 5. e8Q f1Q† 6. Kd2 Qc1† 7. Ke2 Qb2† wins, or 2. Sxe2? Rxe2 3. Bxd5 Rxe7 wins. iii) 2. ... Rcl† 3. Kf2 Rf1† 4. Kg3 Rg1† 5. Kf2 Rg2† 6. Kel f2† 7. Kxe2 Bc4† 8. Ke3 f1Q 9. Qe5† f6 10. Qe7† Kh6 11. Qf8† draw. iv) 5. Qf2? Rxf2 6. Bxd5 Kxh8 7. Kg1 Rc2 8. Sa4 Rg2† 9. Kf1 Rxc4 10. Sc3 Kg7 11. Bxf3 Rc4 12. Sa2 Kf6 13. Kel Ke5 wins. v) 8. ... Rh1 9. Kxf2 Rxh8 10. Ke3 draw.

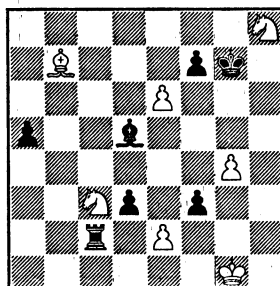
**F.6** P. Farago (111)  
6th Pr.,  
Vittorio de Barbieri  
Memorial Tourney  
L'Italia Scacchistica, 1947



Win

4

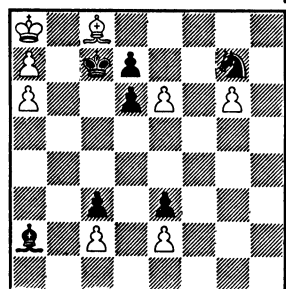
**F.7** P. Farago (145)  
Special Prize,  
Tidschrift KNSB, 1948



Draw

7

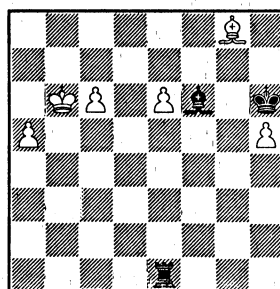
**F.8** P. Farago  
(104 and 63)  
2nd Pr., Enroque!! 1950



Draw

8

**F.9** P. Farago (132)  
'Peoples' Democracies  
Competition, 1951



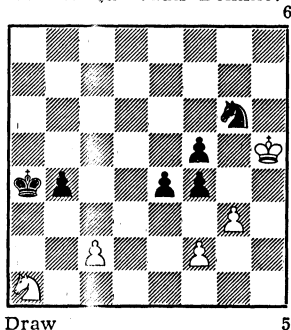
Win

6

**F.8:** 1. e4 Se6 2. g7/i Sd8 3. Bb7 Bc4 4. Bh1/ii Bf7/iii 5. Bf3 d5 6. Bh5 Bg8 7. Bf7 Sxf7 8. d8Q† Sxd8/iv stalemate. i) 2. d8Q†? Sxd8 3. g7 Bd5† 4. Bb7 Bg8 5. Be4 Se6 6. Bd5 Sc5 7. Ec6 Sd7 wins. ii) 4. Be4? Bg8 5. Bf3 d5 6. Bh5 d4 7. Bf7 Bh7 8. g8Q Bxg8 9. Bxg8 d3 wins, or 4. Bf3? Bf7 5. Be4 Bg8 wins, or 4. Bg2? Be6 5. Bf3 Bf7 6. Be4 Bg8 wins. iii) 4. ... Bg8 5. Be4 d5 6. Bh7 Bf7 7. Bg6 draw, or 4. ... Be6 5. Bg2 d5 6. Bh3 Bf7 7. Be6 Sxe6 8. d8Q† Kxd8 9. Kb7 Sc7 10. a8Q† Sxa8 11. Kxa8 Kc7 12. a7 d4 13. g8Q Bxg8 stalemate. iv) 8. ... Kxd8? 9. Kb7 wins.

**F.9:** 1. a6/i Rb1† 2. Ka7/ii Rc1 3. Kb7 Rb1† 4. Kc8/iii Rc1/iv 5. a7/v Ra1 6. Kb7 Rb1† 7. Ka8 Rc1 8. Bf7 Kg7 9. Bg6 Rc3 10. Bd3 Bd4/vi 11. h6† Kf8 12. h7 Rxc6 13. h8Q† Bxh8 14. Kb7 wins. i) 1. c7? Rb1† 2. Kc6 Rc1† 3. Kd7 Rdl† 4. Kc8 Rc1 5. a6 Be5 draw. ii) 2. Kc7? allows a 'Bl dual': 2. ... Be5† 3. Kc8 Rc1 4. e7 Rxc6† 5. Kd8 Rxa6 draw, or 2. ... Kg7 3. a7 Ra1 4. Kb7 Rb1† 5. Ka6 Ra1† 6. Kb6 Bd4†. iii) 4. Ka8? Rc1 5. a7 Kg7 6. Bf7 Bd4 7. h6† Kf8 8. h7 Ke7 9. Bg6 Rc3 10. Bf5 Ra3 draw. iv) 4. ... Kg7 5. c7/vii Ra1 6. e7/viii Bxe7 7. Kd7 Rc1 8. a7 wins. v) 5. Kd7? Rdl† 6. Ke8 Rd8† 7. Kf7 Rc8 8. Kxf6 Rxc6 9. a7 Ra6 draw. vi) 10. ... Be5 11. Bb5 Rb3 12. Kb7 Rxb5† 13. Ka6 Rb1 14. a8Q Ra1†

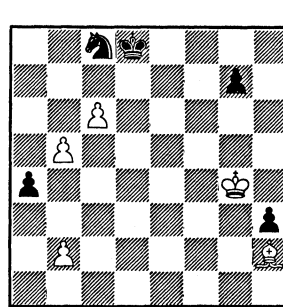
**F.10** P. Farago (113)  
Luigi Centurini Memorial  
Tny, 1952  
Motto: Quo vadis Domine?



Draw

5

**F.11** P. Farago (129)  
Shakhmaty v SSSR, 1955



Win

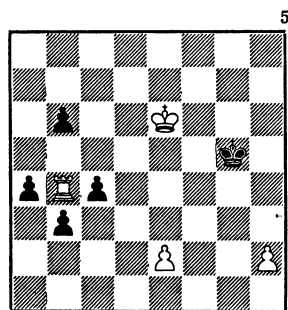
5

15. Kb7 Rxa8 16. Kxa8 Kf6 17. h6 Kxe6 18. h7 Kf7 19. h8Q and 20. c7 wins. vii) 5. Bf7? Be5 6. h6† Kf8 7. h7 Ke7 8. c7 Rcl 9. h8Q Bxh8 10. a7 Be5 11. a8Q Rxc7† 12. Kb8 Rd7† draw, or 5. Bh7? Kxh7 6. c7 Ra1 7. Kd7 Rd1† 8. Kc6/ix Rcl† 9. Kb6 Kg7 10. a7 Bd4† 11. Kb7 Bxa7 12. h6† Kxh6 13. e7 Rel 14. c8Q Re7† 15. K- Kg7 draw. viii) 6. Bf7? Be5 7. h6† Kf6 8. h7 Ke7 9. Bg6 Rcl 10. h8Q Rxc7† 11. Kb8 Rc5† 12. Qxe5 Rxe5 13. a7 Rb5† 14. Kc7 Ra5 draw. ix) 8. Ke8 Rcl 9. a7 Rxc7 10. a8Q Rg7 draw.

**F.10:** 1. gf Sxf4† 2. Kg5 Se6†/i 3. Kxf5 Sd4† 4. Kf6/ii e3 5. fe Sxc2 6. e4 Sxa1 7. e5 Sc2 8. e6 Se3 9. Ke5 Sc4† 10. Kd5 Sb6† 11. Kc6 Sc8 12. Kd7 draw. i) 2. . . Sd3 3. Kxf5 Se1 4. Sb3 Sxc2 5. Sc5† Kb5 6. Sxe4 draw. ii) 4. Kxe4? Sxc2 5. Sxc2 b3 6. Kd3 b2 wins, or 4. Kf4? e3 5. fe Sxc2 6. e4 Sxa1 7. e5 Sb3 8. e6 Sc5 9. e7 Se6† 10. K- Sc7 wins, or 4. Kg4? e3 5. fe Sxc2 6. e4 Sxa1 7. e5 Sc2 8. e6 Se3† 9. K- Sd5 wins, or 4. Kg5? e3 5. fe Sxc2 6. e4 Sxa1 7. e5 Sb3 8. e6 Sc5 9. e7 Se6† wins, or 4. Ke5? e3 5. fe Sxc2 6. Sxc2 b3 wins, or 4. Kg6? e3 wins.

**F.11:** 1. Kf3/i Sa7/ii 2. b6/iii Sxc6 3. b7 Rd7 4. Ke4 Ke6/iv 5. Bg3 (duals) g5 6. Be5 g4 7. Bh2 Kd7 8. Kd5 Sb4† 9. Kc5 and 10. Kb6 wins. i) 1. Kxh3? Sa7 2. c7† Kc8 3. b6 Sb5 4. Kg4 (Be5, a3) 4. . . a3 5. ba Sc3 6. Kf5 Sd5 7. Bg1 Sxc7 8. a4 Kb7 9. a5 Sb5 10. Ke6 g5 11. Be3 g4 12. Bf2 Sa3 13. Kd5 Sb5 14. Kc5 Sc7 (. . . Sa7? a6†) 15. Bg3 Sa6† draws. Or 1. Kf5? Ke7 2. c7/v Kd7 3. Ke4 Sb6 4. Kd4 Sa8 5. Kc5 Sxc7 6. b6 Se6† 7. Kd5 Sc8 draw. ii) 1. . . Ke7 is the alternative. 2. Ke3/vi Sd6 3. c7 Sc8 4. Kd4 Kd7 5. Kc5 Se7 (else b5-b6) 6. Kb6 (b6? Kc8) 6. . . Kc8 7. Ka7 g5 (playing for . . . Sc6†) 8. Be5/vii g4/viii 9. Bg3 Sc6†/ix 10. bc h2/x 11. Bxh2 g3/xi 12. Bxg3 a3 13. b4 a2 14. Be5 wins. iii) 2. c7†? Kc8 3. b6 Sc6 4. Bd6 g5 5. Kg3 g4 6. Kxg4 Se7 7. Kxh3 Sd5 8. Bc5 a3 9. ba (Bxa3 Sxb6, or 9. b4 a2) 9. . . Sxc7 10. a4 Kb7 11. Kg4 Kc6 12. Kf5 Sd5 13. a5 Kxc5 14. b7 Se7† draw. iv) 4. . . Sb8 5. Kd5 wins, but not 5. Bxb8? Kc6. v) 2. Ke5 Sd6 3. c7 Kd7 4. b6 Sc4†. Or 2. Kg6 Ke6 3. c7 (Kxg7 Kd5) 3. . . Kd7 4. Kxg7 Sb6 5. Kf7 Sa8 draw. Or 2. Bg3 Sd6†. vi) 2. Ke4? Sd6† 3. Bxd6† Kxd6 4. Kf3 g5. Or 2. Ke2? Ke6 and 3. . . Kd5. vii) 8. Bd6? Sf5 9. B- Sd4 is left as drawn (10. b6 Sc6† 11. Ka8 Sb5, or here 11. Ka6 Sb4† 12. Kb5 Sd3), as is 8. Bg3? g4 9. B- g3 10. Bxg3 Sc6† 11. bc a3 12. ba h2 draw. AJR: It seems part of

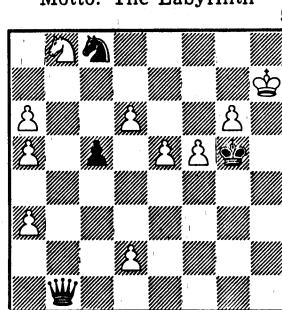
F.13 P. Farago (109)  
1st Pr., 1936 Olympiad



Draw

4

F.14 P. Farago (144)  
Magyar Sakkvilag, 1944  
Motto: The Labyrinth



Draw

9

Farago's style that the supporting variations are sometimes more attractive than the given main line - certainly this "inside-out" method of composing lends itself to great difficulty of solutions.

viii) 8. ... Sc6† 9. bc g4 10. Bg3, a manoeuvre basic to the struggle.  
ix) 9. ... Sf5 10. b6. Or 9. ... a3 10. ba h2 11. Bxh2 g3 12. Bxg3 Sc6† 13. Kb6, or here 11. ... Sc6† 12. bc g3 13. Bg1 wins. x) 10. ... a3 11. ba h2 12. Bxh2 g3 13. Bg1 Kxc7 14. a4 Kxc6 15. a5 Kc7 16. a6 Kc8 17. Ka8 Kc7 18. a7 Kc8 19. Bb6 g2 20. Bf2 Kc7 21. Bg1 Kc8 22. Bb6.  
xi) 11. ... a3 12. ba g3 13. Bg1 as before.

F.12: see EG9, p. 235, or (103).

F.13: 1. h4† Kh5/i 2. Kf5 c3/ii 3. e3 c2 4. Rc4 b2/iii 5. Rc8 Kh6 6. Kf6 Kh7 7. Rc7† draw. i) 1. ... Kg6 2. h5† Kg7 3. h6† Kg6 4. h7 Kxh7 draw. ii) Now if 3. e4? c2 4. Rc4 b2 5. Rc8 c1Q wins. The alternative, leading to the illustration of the theme, is 2. ... a3 3. e4/iv c3/v 4. Rc4 c2 5. Rc8 c1Q/vi 6. Rxc1 a2 7. Rd1 b5 8. Rc1 b4 9. Rd1 b2 10. Rd8 draw, as bPb2 prevents a bQa1 controlling h8, so wK on f-file can keep opposite bK to maintain a drawing mating threat. iii) 4. ... c1Q 5. Rxc1 b2 6. Rd1 a3 7. e4 a2 8. Rd8 Kh6 9. Kf6. iv) 3. e3? a2 4. Ra4 b2 wins. The theme is now clear: W replies to 2. ... c3 with 3. e3, and to 2. ... a3 with 3. e4, the alternatives in either case losing. v) 3. ... a2 4. Ra4 b2 5. Ra8 draws, or 3. ... b2 4. Rxb6 a2 5. Rb8 draws. vi) 5. ... Kxh4? 6. Kf4 c1Q† 7. Rxc1 Kh3 8. Kf3 Kh2 9. e5 wins.

F.14: No printed solution appears in "Idei Noi in Sahul Artistic". (A similar article to the present one appeared in *Thèmes-64*, vii-ix.71, with an editorial note to F.14 that an unpublished solution has been traced -- *Thèmes-64* hopes to print it in their x-xii.71 issue. AJR)

#### Reprint of EG1 and EG2

Many correspondents have asked for back issues of EG. Very few issues are available. However, a small reprint of EG1 (vi.1965) and EG2 (x.1965) has just been completed, and they are available at £ 0.50 or \$ 1.50 each. From AJR.

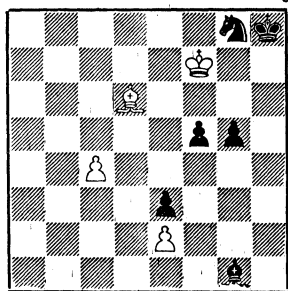
A new magazine, "Scacco!". This is yet another Italian magazine, with a studies section run by Ettore Volta. It is in its second year. AJR

## SPOTLIGHT

directed by WALTER VEITCH

It is time for me to end with "Spotlight", as a regular feature anyhow, though I shall still be prepared to deal with analysis from readers. By the time this appears in print I shall have moved to a new address (see back page) and have a house and garden to occupy me which will be much more important and rewarding than chess. Meanwhile there is obviously enough material to fill EG also without this column, so readers can look forward to more studies, and enough has perhaps been said here over the past 6 years to show that appreciation should be allied to a fair degree of critical watchfulness. Samuel Butler once wrote: "The artist drew a great many lines and saved the best of them". Endgame composers often enough tend to save a number of less good lines as well, and (as EG shows) there is no hope really that accuracy will improve.

A.



Win  
 1. c5 f4 2. c6 f3 3. ef/i Se7  
 4. Bxe7 Bh2 5. f4 Bxf4 6.  
 Bxg5 e2 7. Bxf4 e1Q 8. c7  
 Qc3 9. Be58 Qxe5 10. c8K†  
 wins. i) 3. c7? f2 4. Kg6  
 Bh2!

EG3, No. 116: V. A. Korolkov.

A Black draw was quoted on p. 217 of EG24. Diagram A is a correction which the composer sent on 28.ix.70 to Harold Lommer, who advised us of it. It is not clear whether it has been published. Essentially, the solution has been shortened by one move.

EG14, No. 720: G. Teodoru & C. Niewiadomski. Note (i) gave a line arriving at W: Ka5 Qb8; B: Kg2 Sh8 Ph2 and AJR commented that W would win by checking until Qe4† Kg1 etc. Mr. Teodoru, who only recently became aware of this comment, points out that the correct reply to Qe4† is .. Kg3! and after Kb4 Sf7 B1 draws by the threat of Sg5-h3-f2. An interesting point, which was omitted from the solution published in Szachy.

EG24, No. 1302: V. Kalandadze. Dr. Gorgiev advises that the idea used for a win in No. 1302 was previously exploited in the drawing study of Diagram B.

EG25, p. 242-3: T. B. Gorgiev's article.

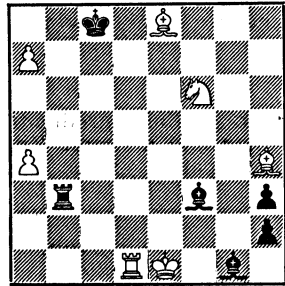
No. 4: Black draws by 3... d4 4. Sxd4 b3† 5. Sxb3 b6!

No. 5: A bPb4 is missing from the diagram.

No. 7: A quicker win is 6. Sd8-e6-d4. A corrected and improved version, kindly advised to us by the composer, is shown in Diagram C.

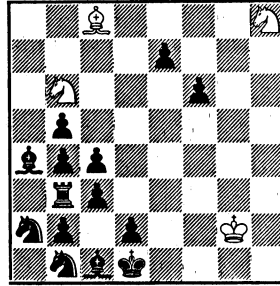


B. T. B. Gorgiev &  
D. Godes  
Cheskoslovensky Shakh 1959



Draw 7  
1. Rd8† Kc7/i 2. Sd5† Bxd5  
3. Rxd5 Bxa7/ii 4. Rd7† Kc8  
5. Rd8† Kb7 6. Rd7† Ka6 7.  
Rd6† Rb6 8. Rxb6† Kxb6 9.  
a5† Kc5 10. Be7† Kd5 11. Bf7†  
Ke5 12. Bf6† Ke4 13. Bg6†  
Kf4 14. Bg5† Kf3 15. Bh5†  
Kg3 16. Bh4† Kf4 17. Bg5†  
Ke4 18. Bg6† Ke5 19. Bf6†  
Kd5 20. Bf7† Kd6 21. Be7†  
Kc6 22. Be8† Kc7 23. Bd8†  
Kb7 24. a6† Kxa6 25. Bc6=,  
i) 1. ... Kxd5 2. Sd5† Kxe8  
3. a6Q† Kf7 4. Qd8=  
ii) 3. ... h1Q? 4. Be8† Kb7  
5. Bc6†

C. T. B. Gorgiev  
Commended,  
Tidskrift för Schack, 1970  
Award ix.71



Win 4  
1. Kf1/i Ra3 2. Bf5 e6 3. Sd5  
exd5 4. Sf7/ii d4 5. Sh6/iii  
d3 6. Bg4† Kc2 7. Bd1† Kxd1  
8. Sf5 Kc2 9. Sd4† Kd1 10.  
Kf2 f5 11. Sxf5 Kc2 12. Sd4†  
Kd1 13. Kf1 any 14. Sf5 and  
15. Se3 mate. i) 1. Kf2?  
would prevent the later  
threat of 6. Sf2 mate.  
ii) 4. Sg6? d4 5. Sf4 Bb3!  
iii) 5. Sd8? Bb3!

P. 250-5: C. M. Bent's article.

C1: With bK at h1 the position is in fact won by 5. Se4 Bf1 6. Sg3† Kg2  
7. Sxf1 Kxf1 8. Be7.

C2: This also would be a win bK at h1, much as in C5, by 1. Sc7 Bc4  
2. Se5 Bg8 3. Bd2 Kg2 4. Sb5 Kf2 5. Sd4, whereafter Se5 moves to b3  
winning.

J: A dual draw is 1. Bxe2 Bd6 (1. ... Bxe6 2. Bxc4† Bxc4 stalemate)  
2. Sd4 Kb6 3. Kb3.

No. 1346: V. Vlasenko. Black mates by 4. ... Sa4-b6-d7. How can one  
possibly miss such a simple thematic stalemate avoidance? (Compare  
No. 1295 in EG24)

No. 1354: V. N. Dolgov & Al. P. Kuznetsov. The idea is not new, see  
No. 394 by Troitski in "1234". Both studies are alike too in suffering  
from dual draws, the Troitski by 6. g8Q, and No. 1354 by 5. Ke6 g2  
6. Sg1 Ba8 7. d4 etc. or even by 5. Sxg3 Kxg3 6. Ke6 etc. Moreover, in  
the supposed solution, how does W draw after 6. Bh6 or after 5. Bc7?

No. 1355: V. N. Dolgov. Another 1st Prize winner which collapses.  
Bl wins by 2. ... Kd6. Apart from that 7. ... Rg1 is a bad defence,  
allowing after 8. Kg4 Rc1 the dual draw of 9. Kf3 Rxc2 10. Ke2 Kc3  
11. Bf4.

No. 1356: V. S. Kovalenko. 1. ... Kb7 is the alternative defence and is met by 2. Ba3 Se3† 3. Kf3 Sxd5 4. Be4 Kc6 5. Kg4 Be3 6. Kf5 Bc5 7. Bb2 Kd6 8. Be5†, a good line worth noting.

No. 1367: F. S. Bondarenko & Al. P. Kuznetsov. A dual win is 4. Qxg3 with an easily won pawn ending.

Nos. 1372-81: F. S. Bondarenko.

No. 1373: A dual win is 2. Ra4 Kf8 3. Rxa5. The ingredients of the position are the threat of a back rank mate and a simple Zugzwang, yet per the comment preceding it no anticipation exists. I am sore puzzled!

No. 1377: The EG solution omits to give the winning method after 9. Bxb3, i.e. B returns to c8, P advances to c5, releasing wK to go and capture on h4.

No. 1378: This position is in fact very similar to a 1950 study by Liburkin & Bondarenko, the added element here being the line 1. ... Be1.

No. 1379: The solution fails because of 12. Bc3†. Instead 5. b4 Bg8 6. Rxb2 wins!

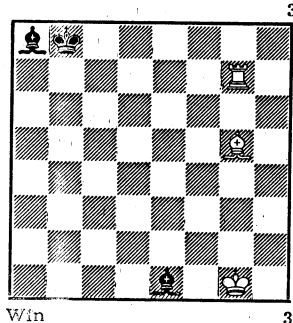
No. 1380: Much simpler 7. Kxh2 or 7. Se4†. Another dual is 5. Se4.

To end with, an excursion outside EG:-

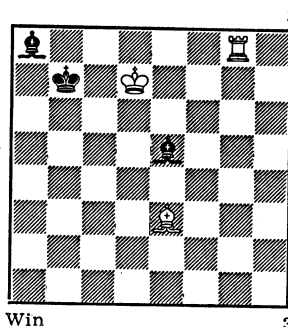
### Forty Years On

In 1929 and the early 1930's a number of related studies appeared of which Diagram D is one. The solution: 1. Bf4† Kc8 2. Kf1/i Bh4 (other B moves lose immediately) 3. Rg8† Kb7 4. Be5 Ka7 5. Bd4† Kb7 6. Ke2 (waiting) Be7 7. Rg7 wins. i) The assumption here was that 2. Rg8† Kb7 3. Kf1 Rc3 would draw, even though after 4. Be3 Be5 5. Kg2 the wK can wander to d7, see Diagram E.

D. G. N. Zakhodyakin  
2nd Prize - "64" 1932



E. (see text)

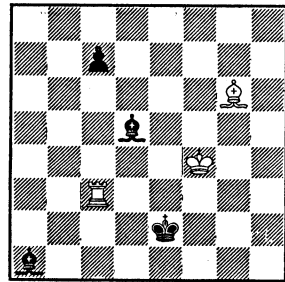


I came across position E in 1968 and decided that from such a situation a win had to be possible, and in due course I proved it in two long and intricate variations which I made the basis of a study to "Chess Life". But before its publication, and rather to my dismay, R. Missiaen in "Schakend Nederland", April 1969, produced a similar analysis, which proved moreover that my two variations could be condensed into one line of some 18 moves from Diagram B. The coincidence of these refutations 40 years on is rather remarkable. Then, in December 1970, I took another look at the matter and found an alternative winning method rather quicker than Missiaen's; i.e. 1. Rc8 Eg3 2. Bc5 Bf4(?) 3. Rc6 (threat Rb6†) Kb8 4. Bd6† Bxd6 5. Rxd6 wins as wK gets to c7, e.g. 5. ... Kb7 6. Kd8 Kb8 7. Rb6† Bb7 8. Kd7 Ka7 9. Kc7 with a stock book win.

But this is not yet the end. Black improves by 2. ... Be1(h4) and there is no win by 3. Rc7† Ka6 4. Ra7† because 4. ... Kb5 attacks wB. Similarly if 1. Rc8 Bg3 2. Bg1 Bf4 3. Bc5 Bd2! holds the balance. Therefore 1. Rc8 Bg3 2. Bg1 Bf4 3. Bf2 Be5 4. Bc5 (Now!) Bg7, the only chance left but not good enough: 5. Rc6 Kb8 6. Rb6† Bb7 7. Bd6† Ka7 8. Kc7 Be4 9. Bc5 Be5† 10. Kd8 Ka8 11. Re6 wins. (Or 8. ... Baf6 9. Rb4; or 8. ... Bg2 9. Rb3/4; or 8. ... Bh1 9. Bc5 Be5† 10. Kc8.) This, I hope, is the last word on Diagram E, of which by now I have had quite enough!

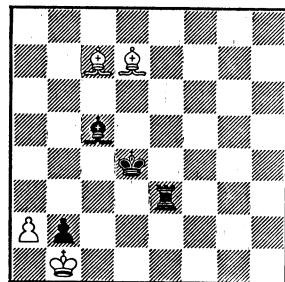
However, before we leave the subject, here are two good related studies. R. Missiaen in F exploits the fact that E is a win. The Sarychev study G elaborates on the 1929 A. & K. Sarychev study in "64" which started the whole business but which now is bust (W: Kg1, Bb2, Bb7, Pg2 - B: Kf4, Rb8, Bh4. The intended draw was 1. g3† Bxg3 2. Bc1† Kg4 3. Bh1 Rb1 4. Kg2 Rxc1 stalemate, but 4. ... Be5 etc. wins).

F. R. Missiaen  
Schakend Nederland  
April 1969



Win 3  
1. Rc2† Kd1 2. Rxc7 Be6/i  
3. Re7 Bh3/ii 4. Rh7 Bb2/iii  
5. Rd7† Kc1/iv 6. Rc7† Kb2/v  
7. Ra7 wins as given above.  
i) 2. ... Ke2 3. Rc2† Kd1 4.  
Ke3 Bh1 (4. ... Bb7 5. Rc7 al-  
so threatening Bh5†) 5. Kd3  
Bf3 6. Rf2; or 2. ... Bb3 3.  
Rb7 Bc2 4. Rd7†; or 2. ... Bg8  
3. Rc8 Be6 4. Re8 Bh3 5. Kg3  
Bf1 6. Kf2. ii) 3. ... Bc8 4.  
Re8. iii) 4. ... Bf1 5. Ke3  
Bg2 6. Rd7†. iv) 5. ... Ke1  
6. Bh5 Bf6 7. Kg3. v) 6. ...  
Kd1 7. Ke3 Bb2 8. Ba5† Ke1  
9. Rc2.

G. A. Sarychev  
1st Pr. - New Statesman  
1961



Draw 4  
1. Bd8/i Kc4 2. Kxb2/ii Ba3†  
3. Kb1/iii Re1† 4. Kc2 Re2†  
5. Kd1/iv Re3 6. Bf5 Re5 7.  
Bb1 Rd5† 8. Kc2 Rb5/v 9. Bf6  
Rf5 10. Bh4 Rh5 11. Be1 Rh2†  
12. Kd1=, or 11. ... Rh1 12.  
Bd2=  
i) 1. Kxb2? Re7 ii) 2. Bf6?  
Ba3 3. Bxb2 Re1† 4. Kc2 Re2†  
iii) 3. Kc2? Rc3† iv) 4.  
Kb1? Rb2† v) 8. ... Rxd8  
stalemate.

## RESULT OF "DR PAOLI'S COMPETITION FOR COMPOSERS"

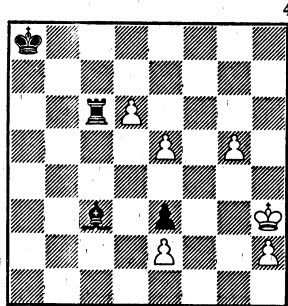
(see EG21, p. 153)

Only three entries were received from: F. Schuermans (Belgium), I. Vandecasteele (Belgium), and W. Veitch. The prize, a subscription to the Italian quarterly *Sinfonie Scacchistiche* donated by Dr Paoli, goes to Mr Schuermans, whose analysis is given below. The task was to correct a study published in 1938 by the Italian composer Vittorio de Barbieri, and to correct it by finding a correct placing of the black king.

### Mr Schuermans' analysis

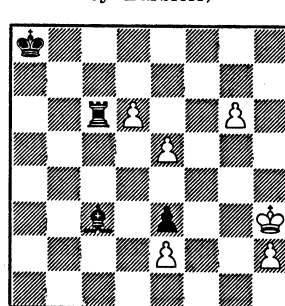
In my opinion the composition cannot be corrected by moving bK. The theme requires promotion by W on d8, but any position of bK will in fact lead to either a Bl win or a W win. From Diagram B1:

**B1** Vittorio de Barbieri  
Revista Romana de Sah  
1938



Draw(?) 6  
Composer's solution: 1. d7 Ba5 2. e6 Bd8 3. g6 Rc5 4. e7/i Bxe7 5. g7 Rg5 6. d8Q† Bxd8 7. g8Q Rxc8.  
i) 4. g7? Rh5† 5. Kg4 Rg5† 6. Kh3 Rxc7 7. e7 Rxe7 wins.

**B2** F. Schuermans  
(Correction of B1  
by Barbieri)



Draw 6  
Solution: see article. AJR: "It is a pity that the solution is now two moves shorter."

**I.** d7 Ba5 2. e6 Rxe6 3. g6. This is the play in I to V. Now,

**I:** bKa8, a7, a6, b5, c5, d5 3. .. Kb7(c6) 4. g7 Rh6† 5. Kg3 Rg6† 6. Kh3 Kc7 and wins, as shown in Dr Pirrone's original demolition.

**II:** bKa8 There is also, in this case: 3. .. Ka7 4. g7 Rh6† 5. Kg3 Rg6† 6. Kh3 Rg7† 7. d8Q Rh7†!! 8. Qh4 Rxh4† 9. Kxh4 Kb6 10. Kg3 Kc5 11. h4 Kd4 12. h5 Kc3 13. h6 Kd2 14. h7 Bc3 wins. Or here 11. Kf4 Kd4 12. h4 Bc7† 13. Kf5 Be5 14. h5 Bh8. The first of these two lines is also the key to the wins in **III** below.

**III:** bKa7, a6, b5, c5, d5, a1, a2, a3, a4, b1, b2, b3, c1, c2, d4, c4, d1, d2, f4 In all these cases bK moves on 3rd and 9th moves to reach any of the following squares in the line of **II** above: b4, c4, c3, c2, d2, f3, d4. Bl wins.

IV: bKe4 3... Rxc6 4. d8Q Rh6† 5. Qh4 Rxh4† 6. Kxh4 Kd4 7. Kg4 Kc3 8. Kf4 Kd2 9. Kf3 Bc3.

V: bKe1, f1, f2, g1, h1 3... Rxc6 with variations already seen.

VI: bKa5 W wins. 1. d7 Bxe5/i 2. d8Q† Bc7/ii 3. Qd5† Kb6 4. Qb3† Ka6 5. g6 Be5 6. Qd3† Kb6/iii 7. Qb3† Kc5 8. Qf7 wins.  
i) 1... Bd4 2. d8Q† Bb6 3. Qd5† Rc5 4. Qxc5† Bxc5 5. g6 Bf8 6. e6.  
ii) 2... Kb5 3. Qe8 Bd4 4. g6 Kb6/iv 5. Qd8† Kc5 6. Qg5† Kc4 7. g7 Bxc7 8. Qxc7. Or 2... Kb4 3. Qd5 Rc5 4. Qe4† Kb3 5. g6 Bg8 6. Qb7† Kc2 7. Qh7 Bg7 8. Qxc7 Rh5† 9. Kg4.  
iii) 6... Kb7 7. Qb5† Rb6 8. Qxe5 Rxc6 9. Qe4 Rc6 10. Qxc6.  
iv) 4... Kc5 5. g7 Bxc7 6. Qe7†. Or 4... Bg7 5. Qf7 B- 6. g7 Bxc7 7. Qxc7.

VII: bKb4 Again, W wins. 1. d7 Be5 2. d8Q Bc7/i 3. Qd4/ii Rc4/iii 4. Qb2† Ka5/iv 5. g6 Re4 6. Qa1† Kb5 7. Qb1† Rb4 8. Qxb4† wins.  
i) 2... Bf4 3. g6 Rg6 4. Qd4† Ka5 5. Qa1† Kb5 6. Qb1†. Or 2... Bd6 3. Qd7 Kc5(b5) 4. g6 wins.  
ii) 3. g6? Bxd8 4. g7 Rh6† 5. Kg2 Rh5 6. g8Q Rg5† 7. Kh3 Be7 8. Qg7 Rxc7 stalemate!  
iii) 3... Ka5 4. g6 Rxc6 5. Qa1† Kb6. Qb1† and 7. Qxc6, or here 4... Rc1 5. g7 Rg1 6. Qd5†.  
iv) 4... Ka4 5. g6 Ba5 6. g7 Rc8 7. Qa2† and 8. g8Q.

However, Mr Schuermans corrects the study (as Walter Veitch does also) by leaving bK on a8 and moving wPg5 to g6 (Diagram B2).

1. d7/i Ba5 2. e6/ii Rxe6/iii 3. g7 Rg6/iv 4. d8Q† Bxd8 5. g8Q Rxc7 stalemate.

i) 1. Kg4? Bxe5 2. Kf5 Rd6 3. Kxe5 Rxc6 4. Ke4 Rg2. Or 1. g7? Rc8 2. d7 Rd8 3. e6 Bf6.

ii) 2. g7? Rh6† 3. Kg3 Rg6† 4. Kh3 Rxc7 5. e6 Kb7, or here 4. Kf4 Bd8 5. Kxe3 Rxc7.

iii) 2... Bd8? 3. g7 wins.

iv) 3... Rh6† 4. Kg3 Rg6† 5. Kh3 Kb7 6. d8Q Bxd8 7. g8Q Rxc7 stalemate.

A. J. ROYCROFT  
6.vii.71

---

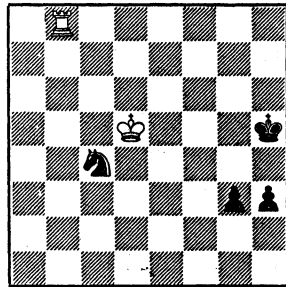
The galley proofs of "Test Tube Chess" (sub-title: A Comprehensive Introduction to the Chess Endgame Study) are being corrected. The publishers are Faber and Faber, and the provisional date of publication is i.v.72. There will be about 450 diagrams and about 350 pages. Author: AJR.

# GEORGY VASILEVICH AFANASIEV

24 xii.1910 - 26 iii.1971

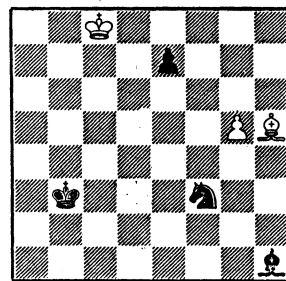
Georgy Afanasiev published his first study in 1927 in the magazine "64". During 45 years of composing activity he published about 110 studies, of which 60 were in collaboration with E. I. Dvizov from about 1965 onwards. His last years were his most successful, including his participation in the Byelorussian team which won the team championship of the U.S.S.R. in 1968. Of late, he published articles in EG, Szachy and Problem; "declining the double attack" and unpinning were two themes advanced by him. In life he was a construction engineer, though from the outset of the war until 1957 he was in the Soviet Army. (From materials supplied by E. I. Dvizov).

G. V. Afanasiev  
3rd Mon. Ment., 64, 1928



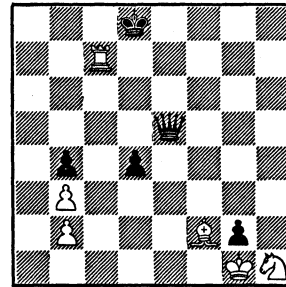
Draw 2  
1. Ke4 h2 2. Kf4 g2 3. Rh8†  
Kg6 4. Rxh2 g1Q 5. Rg2†  
Qxg2 stalemate.

G. V. Afanasiev  
Sovetskaya Byelorussiya,  
1959



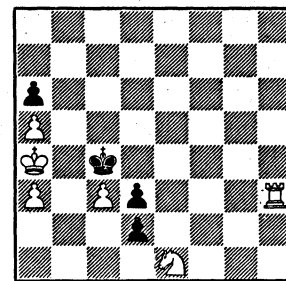
Win 3  
1. Bf7† e6 2. g6/i Sh4 3. g7/ii  
Sf5 4. Bxe6† Bd5 5. Bxf5  
wins.  
i) 2. Bxe6†? Kc3 3. g6 Sd4 4.  
g7 Bd5 5. Bxd5 Sf5 draws.  
ii) 3. Bxe6†? Bd5 4. Bxd5†  
Kc3 5. g7 Sf5 draws.

G. V. Afanasiev  
Vo slavu Rodiny, 1949



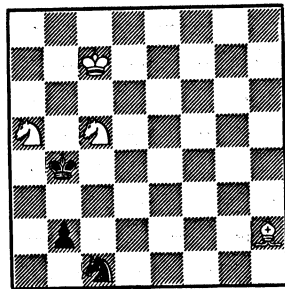
Draw 6  
1. Bh4† Kxc7 2. Bg3 ghQ† 3.  
Kxh1 Kd6 4. Kg2 d3 5. Kf1  
Qxg3 stalemate.

G. V. Afanasiev, E. I. Dvizov  
Problem, 1968



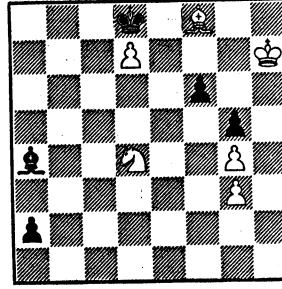
Draw 6  
1. Rh4† Kxc3/i 2. Re4† Kxe4  
3. Sc2 Ke3/ii 4. Se3 Kd4 5.  
Sd1 Kc4 6. Sc3 Kxc3 stale-  
mate.  
i) 1. ... Kd5 2. Rd4† Ke6 3.  
Re4† Kf5 4. Rf4† Kg6 5. Rg4†  
Kh5 6. Rh4† draw.  
ii) 3. ... de stalemate. 3. ...  
d1(Q, B) stalemate. 3. ... d1  
(R, S) 4. Se3†.

G. V. Afanasiev, E. I. Dvizov  
4th Hon. Ment., 64, 1969



Draw 4  
1. Se4 b1Q 2. Sc6† Ka3 3. Bd6† Kb2 4. Be5† Kc2 5. Sc3 Qa1/i 6. Sa2 Qb1 7. Sc3 Qa1 8. Sa2 positional draw.  
1) 5. ... Qb2 6. Sb5 draws.

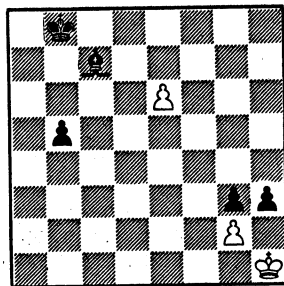
G. V. Afanasiev, E. I. Dvizov  
Szachy, 1970



Draw 6  
1. Sb3 Bxb3 2. Bg7 and now two lines A. 2. ... Bc2† 3. Kg8 Bb3† 4. Kh7 Bg8† 5. Kg6 Bh7† 6. Kf7 (if 6. Kh5? a1B wins) Bg8† 7. Kg6 and a draw.  
B. 2. ... a1B 3. Kg6 Bc2† 4. Kf7 Bb3† 5. Kg6 draw.

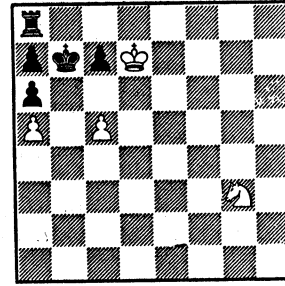
### DIAGRAMS AND SOLUTIONS

No. 1382 F. S. Bondarenko  
2 Comm., Lelo, 1961



Win 3

No. 1383 F. S. Bondarenko  
Ajedrez, 1961

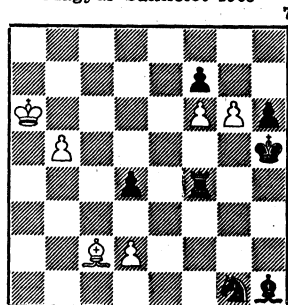


Win 4

No. 1382: F. S. Bondarenko. 1. e7 h2 2. e8Q† Kb7 3. Qxb5† Kc8 4. Qc6 Kd8 5. Qe6 Bb8 6. Qg8† Kc7 7. Qxg3† wins.

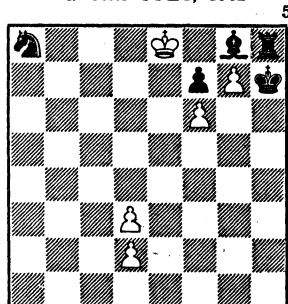
No. 1383: F. S. Bondarenko. 1. c6† Kb8 2. Ke8 Kc8 3. Sf5 Kb8 4. Se3 Kc8 5. Sd5 Kb8 6. Sb4 Kc8 7. Sxa6 Rb8 8. Sxb8 wins.

No. 1384 F. S. Bondarenko  
4 Hon. Men.,  
Magyar Sakkelet 1963



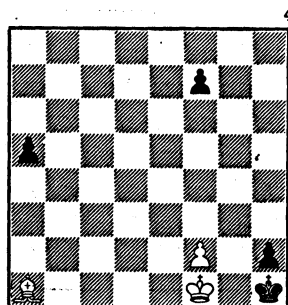
Win 6

No. 1386 F. S. Bondarenko  
1st Pr.,  
Bulletin SOZS, 1962



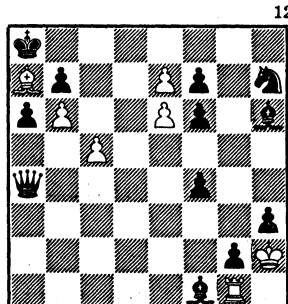
Draw 5

No. 1385 F. S. Bondarenko  
Suomen Shakkilehti, 1962



Win 3

No. 1387 F. S. Bondarenko  
Comm., Thèmes-64, 1962



Win 7

No. 1384: F. S. Bondarenko. 1. g7 Rg4 2. Bd1/i Bf3 3. b6/ii Se2 4. b7/iii Bxb7† 5. Kxb7 Kh4 6. Bxe2 Rg5 7. Bc4 wins. i) 2. b6? Se2 3. b7 Bxb7† 4. Kxb7 Kh4 5. Bd1 d3 6. Bb3 Sg3. ii) 3. Bxf3? Sxf3 4. b6 Se5 5. b7 d7/iii) 4. Bxe2? Bxe2† 5. Ka7 Bf3.

No. 1385: F. S. Bondarenko. 1. Bf6 a4 2. f3 a3 3. f4 a2 4. f5 a1Q† 5. Bxa1 f6 6. Be5 fe 7. f6 wins.

No. 1386: F. S. Bondarenko. 1. Kd7 Sb6† 2. Kc6 Sa4 3. Kd5 Sb2 4. Ke4 Sd1 5. Kf3 Sb2 6. Ke4 Sa4 7. Kd5 Sb6† 8. Kc6 (d6) Sc8 9. Kc7/i Sa7 10. Kb6 Sc8† 11. Kc7 draw. i) 9. Kd7? Sa7 10. Kd6 Sb5† 11. Kc5 Se7 12. Kd6 Se6 wins.

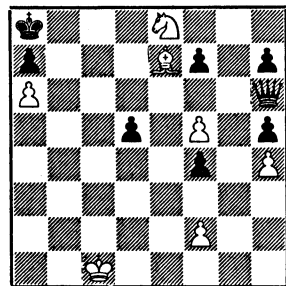
No. 1387: F. S. Bondarenko. 1. c6/i Qxc6 2. ef Bb5 3. e8Q†/ii Qxe8 4. feQ† Bxe8 5. Rd1 g1Q† 6. Kxg1 wins, but not 6. Rxg1? Sf8 7. Rd1 Bd7. i) 1. ef? Bb5 2. e8Q† Bxe8 3. feQ† Qxe8. ii) 3. Rd1? g1Q† 4. Rxg1 Qc2† 5. Kxh3 Qb3† 6. Kh2 Qxf7 wins.

No. 1388: F. S. Bondarenko. 1. Bd6 f3† 2. Kd1 d4 3. Kc2 Qe3 4. Sc7† Kb8 5. Sd5† Ka8 (for a try at stalemate) 6. Sxe3 de 7. Bc5 wins.

No. 1389: F. S. Bondarenko. 1. Be5† Kxb7 2. Kd7 d4 3. Bd6 d3 4. c4 d2 5. c5 d1Q 6. c6 mate.

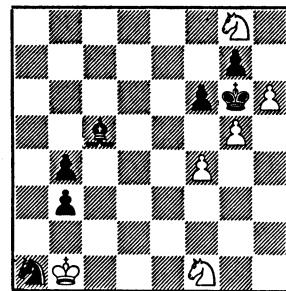


No. 1388 F. S. Bondarenko  
1 Hon. Men.,  
L'Italia Scacchistica 1963



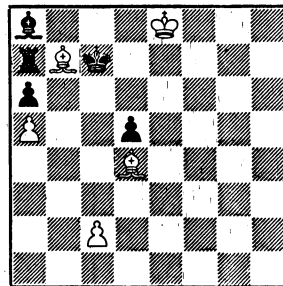
Win 7

No. 1390 F. S. Bondarenko  
Shakmaty v SSSR, 1970



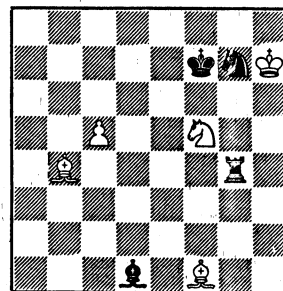
Win 6

No. 1389 F. S. Bondarenko  
1st Pr.,  
Leninskaya Smena, 1964



Win 5

No. 1391 C. M. Bent  
and W. Veitch  
1st Prize, Hungarian Chess  
Federation Award, 1970



Win 5

No. 1390: F. S. Bondarenko. 1. f5† Kh7 2. g6† Kxg8 3. h7† Kh8 4. Kxal Bd4† 5. Kb1 Ba1 6. Sd2/i b2 7. Ka2(c2) wins. i) 6. Se3? b2 7. Sc4 b3 8. Sd6 and stalemate.

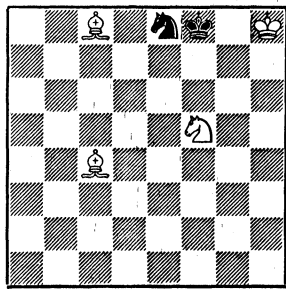
No. 1391: C. M. Bent and W. Veitch. 1. Sh6† Kf8 (else 2. Sxg4) 2. c6†/i Rxb4 3. c7 Rc4 (3. ... Bc2† transposes) 4. Bxc4 Bc2† 5. Kh8 Bf5 6. Sxf5 Se8 7. c8B wins/ii - see No. 1391a.  
i) 2. Sxg4? Bxg4 3. c6† Kf7 4. Bc4† Se6 5. c7 Kf6 6. Bc3† Ke7 7. c8Q Sg5†=. ii) 7. c8Q(R)? stalemate. Or 7. c8S? Sd6 8. Be6 Sf7† 9. Kh7 Sg5† 10. K- Sxe6=.

No. 1391a:

In general it is accepted that 3 minor pieces win against one (Troitzky, incidentally, took it for granted that 3 S's would win against a single S), but this special case with 2 B's on the same colour seems not to have been investigated before. Examination soon suggested the win to be probable, but the question of proving it remained. WV solved it for this position by making White first concentrate on improving the position by the 5 moves Bb7, Pc6, B(6)b5, Kh7 and Kh6, meanwhile in essence ignoring all moves by the bS, which therefore by 12. Kh6 can wander to any of the 32 white squares of the board. The

win was then demonstrated from each square in turn, a task which required 89 columns. This method probably did not always produce the most efficient win, but had the advantage of reducing the whole thing to a systematic exercise.

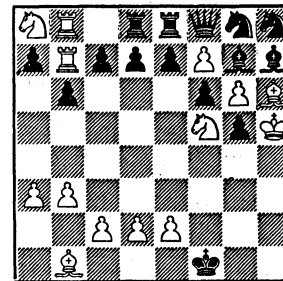
No. 1391a  
Position after 7. c8B  
in No. 1391



Black to Move, 4  
White Wins  
Although theory states that 3 minor pieces win against one, the special case of two B's on the same colour has not been investigated before, as far as is at present known. Troitzky, incidentally, took for granted that three S's would win against a single S. It is assumed that the present analysis breaks new ground, even if the win causes no real surprise. But as the longest variation is 28 moves, and as bK is already at the board's edge, there is at least a possibility that in some cases this ending might pass the 50-move limit. (AJR)

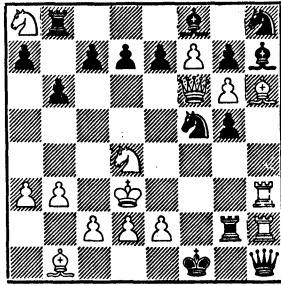
The main line in the analysis arises as one would expect when bS keeps close to bK: 7. ... Sf6 8. Bb7 Ke8 9. Bc6† Kf8/iii 10. B(6)b5 Sd5 (10. ... Sh7 11. Sh4 wins) 11. Kh7 Sf6† (11. ... Se7 12. Sh4) 12. Kh6 Sg4† 13. Kg5 Sf6 (13. ... Se5 14. Sh4 wins rapidly) 14. Sg3 Ke(g)7 15. Kf5 Kf8 (15. ... Sh7 16. Se4 Sf8 17. Bg8) 16. Be6 Kg7/iv 17. Bc6 Sh7 18. Se4 Sf8 19. Be8 Sh7 20. B(6)f7 Sf8 21. Bg6 Kh6 22. Sf2 Kg7 23. Sg4 Kh8 24. Kf6 Kg8 25. Se5 Kh8 26. Ba4 (waiting) Kg8 27. Bb3† Kh8 28. Be6 wins. iii) 9. ... Kd8 10. Se3 Kc7(e7) 11. Kg7 Sh5† 12. Kg6 Sf4† (12. ... Sg3 13. Bg2) 13. Kg5 Sh3† 14. Kg4 Sg1(f2) 15. Kg3 wins. Or if here 10. ... Sh5 11. Kh7 etc. iv) 16. ... Ke7 17. Bc6 Kf8 18. Kg6 Ke7 19. Bc8 Sg8 20. Kg7 Sf6 21. Sf5† wins. WV insists that it would be excessive for EG to give the remaining 80 or so columns. He adds that if any reader is mad enough to want the whole, he will send him a copy on request.

No. 1392 N. Plaksin  
(U.S.S.R.)  
1st Place,  
2nd Team ('Friendship')  
Match, Studies Section, 1965-7  
15



No. 1392: N. Plaksin. For a description of the terms of this international team composing match, see EG9, p. 239-240. The full award was to have been published by the end of 1968, but (surprise, surprise!) has not yet appeared. Judge: Dr S. Zlatic (Yugoslavia).

Draw 14



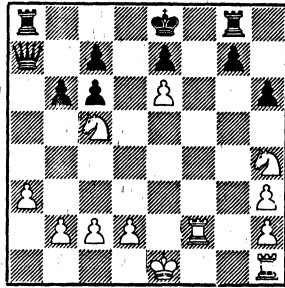
The diagram is reached from the game-start by the following sequence (it is not necessary to give moves): capture bPh7, wPh8Q, a2-a3, wBf1-b1, b2-b3, wBc1-h6, bSb8-h8, wSa8, b7-b6, bBc8-h7, wgPg6, bPf6xwQg5, wPf2-f7. From the diagram Bl plays .. g7xf6, and this is the last capture or p-move for 49 moves (minimum) before reaching diagram No. 1392.

shortest play to reach No. 1392 goes, with some minor alternatives: .. g7xf6; 1. .. Bf8-g7; 2. .. Rg8; 3. .. Bf8; 4. .. Rg7; 5. .. Bg8; 6. .. Rh7; 7. Bg7 Rh4; 8. .. Rhg4; 9. Rh7, 10. Bh6, 11. Rg7 Bh7; 12. Rg8 Bg7; 13. Rb8 Bf8; 14. Bg7 Bg8; 15. Rh7 Rh4; 16. Bh6 Rgh2; 17. Rg7 Bh7; 18. Rg8 Bg7; 19. Rgc8 Bf8; 20. Bg7 Bg8; 21. Rb7 Rh7; 22. Bh6 Rg7; 23. Rcb8 Bh7; 24. .. Rg8; 25. .. Bg7; 26. .. Rc8; 27. .. Bf8; 28. Bg7 Bg8; 29. .. Rh7; 30. Bh6 Rg7; 31. .. Bh7; 32. .. Rg8; 33. .. Bg7; 34. .. Rgd8; 35. .. Bf8; 36. Bg7 Bg8; 37. .. Qh7; 38. Bh6 Qg7; 39. Ke4 Bh7; 40. Kf3 Qg8; 41. Kg4 Bg7; 42. Kh5 Qe8; 43. .. Bf8; 44. Bg7 Sh6; 45. Sf5 Sg8; 46. Bh6 Bg7; 47. .. Qf8; 48. .. Re8; 49. .. Rcd8. It may be noted that the idea has 2 spare moves to save it from demolition, in that wRb7, b8 can be placed on b8 and c8, with necessary moves by bK.

No. 1393: A. Koranyi. 1. 0-0/i bc/ii 2. c4/iii g6 3. Kh1 Qa4 4. Sxg6 Qd1 5. Rxd1 Rxg6 6. Rdf1 wins. i) By a kind of argument whose validity, but not ingenuity, may be contested, 0-0 shows that wRf2 is promoted, since if wK has never moved then wRa1 can never have emerged, given the position of the wP's. But if wRf2 is a promoted wP, on which square could it have arisen? Only 3 possible promotion squares: d8, f8, h8; and in every case bK must have moved, either to permit promotion or to allow wR to emerge legally. What about promotion on b8? In that case, arguing from the position of wP's, Bl P's and the number of captures, it can be shown that Bl fP must have promoted without capture, on f1, hence wK must have moved in reply to .. f3-f2†. In that case W would not be permitted to castle. Therefore, runs the argument, W castling proves that Bl may not castle. (More correctly, and this is where the validity of the argument can be called in question, if W may castle, then Bl may not.) 1. Rhf1? 0-0-0 "prevents" W from castling, though of course in a game the game-score would be

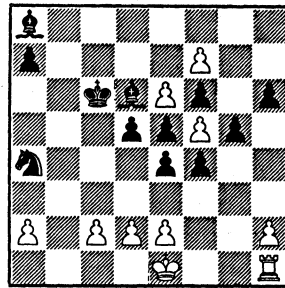
I have no hesitation in pronouncing this a masterpiece. (AJR) It can be demonstrated that at least 49 moves without capture or P-move must have preceded the diagram. The only move to prolong this series for 1 extra move in order to apply the 50-move draw rule, is 1. Sg3†. No good is 1. Se3†? because of the capture reply 1. .. Kxe2. The solver new to retrograde analysis will wonder, though, about those 49 moves. Well, the first rule is to count captures: 2W and 1 Bl men captured. Next, examine P-position to see how many captures are accounted for. In this case wPf7 and wPg6 have somehow passed their opposite numbers, involving 2 captures by W or Bl: but only 1 Bl man missing, so Bl must have captured W men; therefore wPf7 came from f2; therefore bPf6 came by capturing from g7; but this must have been after bBf8 emerged; and bBf8 emerged before the original bRa8 emerged; and bRa8 must have emerged before wR's b7 and b8 could infiltrate. This is the kind of argument one must handle. The last capture took place from a position like No. 1392a. From there on the

No. 1393 A. Koranyi  
(Hungary)  
2nd Place,  
2nd Team ('Friendship')  
Match, Studies Section, 1965-7  
10



Win 12

No. 1394 N. Petrovic  
(Yugoslavia)  
3rd Place,  
2nd Team ('Friendship')  
Match, Studies Section, 1965-7  
12

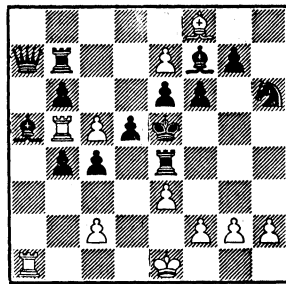


Win 10

independent of the kind of argument involved here (namely, if B1 may castle, then W may not). 1. Sg6? bc and now either 2. Rhf1 0-0-0, or 2. 0-0 c4 3. Kh1 Qxf2; noting that here 1. . . 0-0-0? fails to 2. Sxe7† and 3. Sxc6†. ii) 1. . . b5 2. d4 and 3. Sg6. Or 1. . . g5 2. Sg6. Or 1. . . Qa5 2. Sd7 Qg5† 3. Sg2. iii) 2. Sg6? c4, pinning wRf2.

No. 1394: N. Petrovic. The B1 P's account for 6 captures, that is, all missing W men. Similarly wP's have taken all 4 missing B1 men, so wPe6 came from b2, wPf7 came from g2 via g6, wPf5 is from f2 without capture, and all captures by B1 were therefore by the B1 P's now on d5, e5, e4 and f4. It is important to realise that bPf6 could not have captured from e7, since then bPf4 would have made no captures and the wP's on f-file would be illegally placed (too many retro-captures). Solution: 1. f5xg6/i Bc5 2. e3 fe/ii 3. 0-0 e2† 4. Kg2 ef1Q† 5. Kxf1 and 6. g7 wins. i) If W may castle, then this is demonstrably legal, arguing from the P-position and number of captures. B1 attempts to prevent W from castling, but W succeeds, thus, according to the printed solution "legalising the initial en passant capture retrospectively." ii) 2. . . Bxe3 3. de and 4. 0-0.

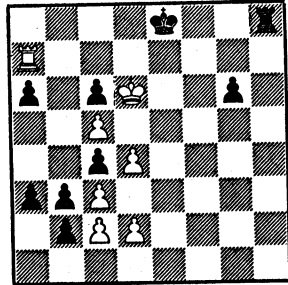
No. 1395 N. Littlewood  
(England)  
4th Place  
2nd Team ('Friendship')  
Match, Studies Section, 1965-7  
14



Win 11

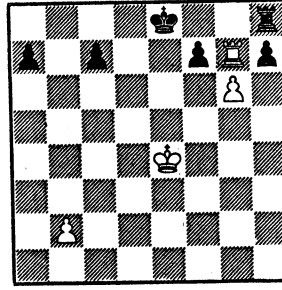
No. 1395: N. Littlewood. The proof that W may castle involves recognition that wRb5 is promoted, that bPh7 promoted (to bS) on f1 (capturing wR there) after 4 captures, and that therefore W's last move was d6xe7 (there is no other), so that bPd5, which can have made no captures (no men available) came on B1's last move from d7. Therefore: 1. c5xd6† Kxd6 2. e8Q† Re7/i 3. 0-0-0†/ii Kc7 4. Qxe7† Kc6 5. Qxa7 wins. i) 2. . . Kc7 3. Pd6† Kxd6 4. 0-0-0† wins. ii) 3. Bxe7†? Kc7 and escapes via b7, vacated by bR. This study is, like the previous one, a case of retrospective legalising of an initial en passant capture.

No. 1396 J. Knöppel  
(Sweden)  
5th Place,  
2nd Team ('Friendship')  
Match, Studies Section, 1965-7  
9



Draw 7

No. 1397 A. Hildebrand  
(Sweden)  
6th Place,  
2nd Team ('Friendship')  
Match, Studies Section, 1965-7  
6



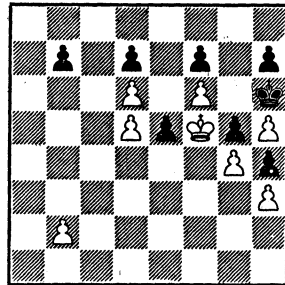
Win 4

No. 1396: J. Knöppel. The 9 captures by Bl P's account for missing W men, while wP's made 4 captures, lifting total of Bl men accounted for to 13 (9 in diagram already). Therefore wPg2, h2 promoted (to be capturable by bP's), both of them. But this is not all: how was wPf2 captured? Only, it appears, by itself having made a capture. And so there are only 2 Bl men left for gP and hP to have taken on their promotion path; and this is not enough to avoid bK or bRh8 having moved. Therefore, Bl may not castle. 1. Ke6 Kf8 2. Kf6 Kg8 3. Rg7† Kf8 4. Ra7 Ke8 5. Ke6 Kd8 6. Kd6 Kc8 7. Ra8† Kb7 8. Rxh8 a5/i 9. Rh7† Ka6 10. Kxc6 b1Q 11. Rh8 Ka7 12. Rh7† Ka6 13. Rh8 Qh1† 14. Rxh1 b2 15. Rh8 draws. i) 8. .. b1Q 9. Rh7† with perpetual check.

No. 1397: A. Hildebrand. An easy introduction to retro-analysis, though this time the play from the diagram is relatively lengthy. Black may not castle, as his last move (leading to the diagram) must have been with bK or bR. 1. Rxh7 Rf8 2. g7 Rg8/i 3. Rh8 f5† 4. Kxf5 Kf7 5. Rxc8 Kxc8 6. Kf6/ii c5 7. b3 a6/iii 8. Ke5 c4/iv 9. bc Kxc7 10. c5 Kf7 11. Kd6 Ke8 12. Kc7 a5 13. c6 a4 14. Kb7 wins. i) 2. .. f5† 3. Ke5. ii) 6. Kg6? c5 7. b3 a5 8. Kf6 c4, or 8. Kh6 a4, in each case Bl promoting with check! iii) 7. .. a5 8. Kg6 a4 9. ba c4 10. a5 wins. iv) 8. .. Kxc7 9. Kd5 Kf6 10. Kxc5 Ke5 11. b4 and 12. Kb6.

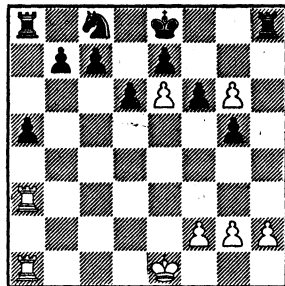
No. 1398: An. G. Kuznetsov. Bl P's show that bPe5 came from c7, so from the possible candidates for a last Bl move, only .. g7-g5 stands up to investigation. 1. h5xc6/i hg†/ii 2. Ke4/iii g5 3. Kf5 e4/iv 4. Kxe4 Kg6/v 5. Ke5 b6 6. b3 Kh7 7. Kf5 Kh6 8. b4 b5 9. Ke4 Kg6 10. Ke5 Kh7 11. Kd4 Kg6 12. Kc5 Kxf6 13. Kb6/vi Ke5 14. Kc7 f5 15. Kxd7 fg 16. hg h3 17. Kc6 wins. i) 1. Kxe5? leaves Bl stalemated in short order. ii) 1. .. fg+ leads to W winning all the K-side pawns at the expense of the f-pawn. iii) 2. Kxe5? Kg5. iv) Forced, sooner or later.

No. 1398 An. G. Kuznetsov  
(U.S.S.R.)  
7th Place,  
2nd Team ('Friendship')  
Match, Studies Section, 1965-7  
8



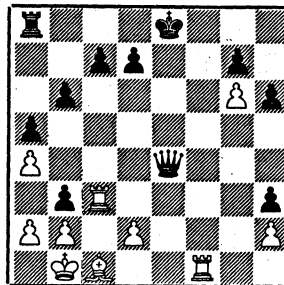
Win 8

No. 1400 B. Jamnicki  
(Yugoslavia)  
9th Place,  
2nd Team ('Friendship')  
Match, Studies Section, 1965-7  
11



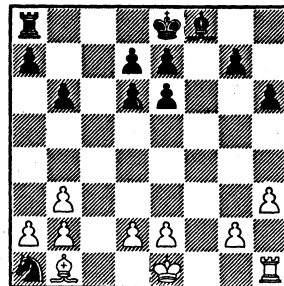
Win 8

No. 1399 J. H. Marwitz  
(Holland)  
8th Place,  
2nd Team ('Friendship')  
Match, Studies Section, 1965-7  
11



Draw 10

No. 1401 V. Bartolovic  
(Yugoslavia)  
10th Place,  
2nd Team ('Friendship')  
Match, Studies Section, 1965-7  
12

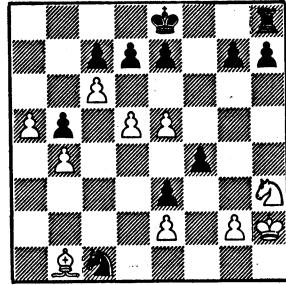


Win 10

No. 1399: J. H. Marwitz. 1. Ka1/i Qb4/ii 2. a3 Qd6 3. Rd3/iii Qc5 4. Rc3 Qd6 5. Rd3 Qxd3 6. Re1† K- 7. Re8† and stalemate! i) One of wR's is promoted, and this can have taken place only on a square where bK must have moved before or after the promotion. Note that W is in check in the diagram, and that after 1. Ka1 he threatens 2. Re3. ii) 1. . . Kd8 2. Rf8† Ke7 3. Re3 Qxe3 4. Rf7† and de. iii) A delightful surprise.

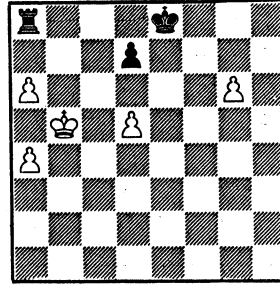
No. 1400: B. Jamnicki. 1. g7/i Rg8 2. Rh3 Sb6 3. 0-0-0/ii Sd7 4. Rh8 Rf8 5. Rxf8† Sxf8 6. g8Q/iii wins. i) W castling before B1 "proves" that wRa3 is promoted and that this promotion involved loss of castling privilege by B1, at least on the Q-side, if wP promoted to R on b8, or on a8. W's first move prevents B1 castling on the K-side. 1. Rh3? 0-0 wins! ii) 3. Rh8? 0-0-0 is allowed, under the convention (which must be accepted if this genre is to continue to exist) that in positions where castling depends on the opponent's ability to castle, the act of castling before the opponent is decisive to the "proof". iii) Not compulsory, as promotion may be delayed a move. A very small flaw. (AJR)

No. 1402 F. S. Bondarenko  
and Al. P. Kuznetsov  
(U.S.S.R.)  
11th Place,  
2nd Team ('Friendship')  
Match, Studies Section, 1965-7  
11



Draw 10

No. 1403 E. Thiele  
(GDR)  
12th Place,  
2nd Team ('Friendship')  
Match, Studies Section, 1965-7  
3



Win 5

No. 1401: V. Bartolovic. wBb1 is promoted, and reached b1 after wPc2xb3. Therefore, and this seems a curiously original point, if W may still castle, there must be found two legal Bl moves to retract. There seems no difficulty, as .. c7xd6 and .. f7xe6 are both "on". But they must both have been captures of wS's (because no other piece could have passed the barrier of W's own P's). However, for one of the captures bK would have been in illegal check (from wSd6, and there is no spare move for wS to have reached that square). Hence, if W can castle, Bl may not. And conversely.

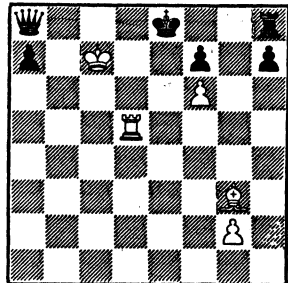
Solution: 1. 0-0/i Rc8 2. Bg6† Kd8 3. Rxf8† Kc7 4. Rxc8† Kxc8 5. Kf1 and so on. i) 1. Rf1? 0-0-0, in accordance with the now familiar logic, if the reader has followed the preceding solutions. Notice that the retractions by Bl must not deprive him of the castling privilege.

No. 1402: F. S. Bondarenko and Al. P. Kuznetsov. 1. e6/i de/ii 2. Bg6†/iii hg 3. de Kf8/iv 4. a6 Kg8 5. a7/v Kh7 6. Sg5† Kg8† 7. Sh3 with an interesting repetition. i) Bl castling is illegal as wBb1 promoted via f7. 1. Bg6†? Kd8 2. e6 dc 3. a6 Kc8. ii) Bl tries to make way for his R to halt aP. iii) 2. de? g5 3. Sxg5 Kf8 4. Sf7 Rg8 5. Sh6 Rg5 6. Bd3 Sxd3 7. a6 Rh5† 8. Kgl Sf2, or here 5. Bxh7 Rg4 6. Kh3 Rg3† 7. Kh2/vi Kg7 8. Be4 Kf6 9. Sh6 Rg5. iv) Not given is 3. .. Rh4 and Bl seems to win by .. Rxb4. (AJR) v) 5. Kgl? Sxe2† 6. Kh2 g5 7. a7 Kh7, or here 6. Kf1 Sg3† 7. Ke1 f3 8. a7 f2†. vi) 7. Kh4 Rxg2 8. a6 Rxe2.

No. 1403: E. Thiele. 1. d6/i Kf8/ii 2. Kb6 Rb8† 3. Kc7 Rb4 4. a5 Rb5/iii 5. a7 Rxa5 6. Kb7 Kg7 7. a8Q Rxa8 8. Kxa8 Kxg6 9. Kb7 Kf6 10. Kc8 Ke6 11. Kc7 wins. i) 1. Kb6? d6 2. a7 Rd8 3. a5 Kf8 4. Kb7 Rd7†. ii) 1. .. Rb8† 2. Ka5 and 3. a7. iii) 4. .. Rc4† 5. Kb6 Rb4† Kc5 wins.

No. 1404 B. Schlotterbeck  
(BRD)

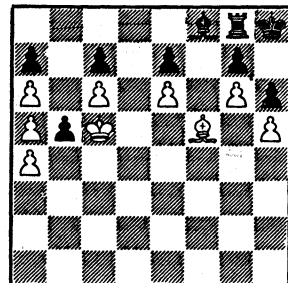
13th Place,  
2nd Team ('Friendship')  
Match, Studies Section, 1965-7



Win 5

No. 1405 J. Hoch  
(Israel)

14th Place,  
2nd Team ('Friendship')  
Match, Studies Section, 1965-7



Win 9

No. 1404: B. Schlotterbeck. 1. Rd3 h5/i 2. Re3† Kf8 3. Bd6† Kg8 4. Rg3† Kh7 5. Rg7† Kh6 6. Bf4 mate. i) bK or bR must have moved last, so no castling. 1. . . Qxg2 2. Re3† Kf8 3. Bd6† Kg8 4. Re8 mate.

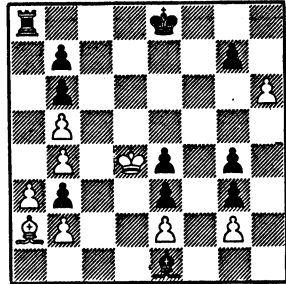
No. 1405: J. Hoch. 1. a5xb6/i cb† 2. Kd5/ii b5 3. a5/iii b4 4. c7 b3 5. c8S b2 6. Sb6 ab 7. a7 ba/iv 8. a8S/v a4 9. Sb6 a3 10. Sc4 b1Q 11. Bxb1 a2 12. Se5 - 13. Sf7 mate. i) Alternative last moves all ruled out, .. Kh7-h8 interestingly because W has no previous legal retraction. ii) 2. Kd4? would allow B1 to promote with check on E1's 12th move, iii) 3. c7? ba. iv) 7. . . b5 8. a8Q b4 9. Qe8 b3 10. Qf7 b1Q 11. Bxb1 b2 12. Bf5 b1Q 13. Qxg8† and 14. Bxb1 wins. v) 8. a8Q? leaves W with no P on the Q-side, hence no win as in line (iv). After an eventual Qxg8† Kxg8; Bxa2, W can make no progress due to stalemate danger to bK.

No. 1406: W. Proskurowski. Another case of excluded castling, wBa2 having promoted over f7. 1. h7 Rd8† 2. Kxe4/i Ke7/ii 3. Bxb3 Rh8 4. Bg8 Bd2/iii 5. Kd3/iv Kf8 6. Kc2 Rxcg8 7. hgQ† Kxcg8 8. Kb3 Kf7 9. Ka4 Ke6/v 10. b3 and stalemate follows. i) 2. Ke5? ba. Or 2. Kxe3? Ke7 3. Bxb3 Rh8 4. Bg8 Kf8. ii) 2. . . ba 3. h8Q† Kd7 4. Qxcg7† Kc8 5. b3 wins. iii) 4. . . Kf8 5. Kd5. iv) 5. Kd5? Bc1. v) 9. . . Bxb4 10. Kxb4.

No. 1407: G. Sonntag. 1. Shxf6† ef/i 2. h7 Ra6† 3. Sb6 Rxb6† 4. Kd5 Se7† 5. Kc5 Sg6 6. Kxb6 Kd7 7. h4 Kc8 8. h5 Sh8 9. Kc6 Kb8 10. Kd6 Kb7 11. Ke6 wins (Kf5 and h6). i) 1. . . gf 2. h7 wins. 1. . . Sxf6 2. Sxf6† ef 3. h7 Ra6† 4. Kf5 Ra5† 5. Kg4 Rxa4† 6. Kg3 Ra3† 7. Kg2 Ra2† 8. Kf1 Ra1† 9. Ke2 Ra2† 10. Kd1 wins.

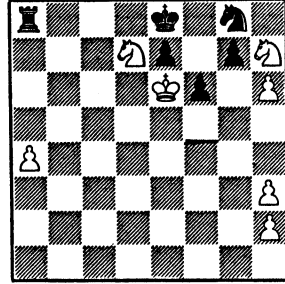


No. 1406 W. Proskurowski  
(Poland)  
15th Place,  
2nd Team ('Friendship')  
Match, Studies Section, 1965-7  
11



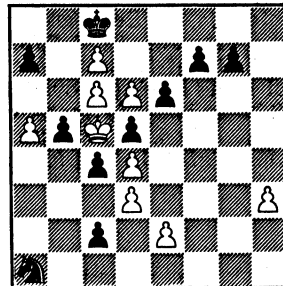
Draw 9

No. 1407 G. Sonntag  
(GDR)  
16th Place,  
2nd Team ('Friendship')  
Match, Studies Section, 1965-7  
6



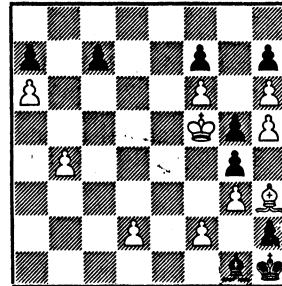
Win 7

No. 1408 K. Fabel  
(BRD)  
17th Place,  
2nd Team ('Friendship')  
Match, Studies Section, 1965-7  
10



Win 9

No. 1409 A. Stavrinides  
(Cyprus)  
18th Place,  
2nd Team ('Friendship')  
Match, Studies Section, 1965-7  
9

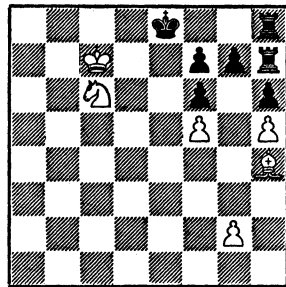


Win 10

No. 1408: K. Fabel. Last move was .. b7-b5. This because bPc2 came from h7, and bBf8 was captured by a wP, so .. e7-e6 is also eliminated. 1. a5xb6 Sb3† 2. Kb5 Sxd4† 3. Ka6 ab/i 4. Kxb6 Sxc6 5. Kxc6 and mates next. i) 3. .. Sxc6 4. b7† Kd7 5. b8Q or 5. c8Q† wins.

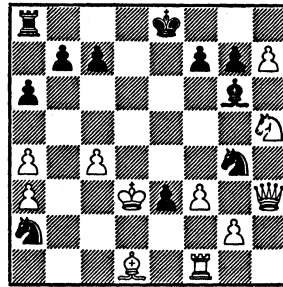
No. 1409: A. Stavrinides. 1. h5xg6 Bxf2/i 2. gh gh/ii 3. h8Q Kg1 4. Qa8 h1Q 5. Qxh1† Kxh1 6. g4 Be1/iii 7. g5 Bxd2 8. b5 Kg1 9. h7 h2 10. h8Q h1Q 11. Qxh1† Kxh1 12. g6 fg† 13. Kxg6 Kg2/iv 14. f7 Bb4 15. Kg7 Kf3 16. f8Q† Bxf8† 17. Kxf8 Ke4 18. Ke7 Kd5 19. Kd7 wins. i) 1. .. hg† 2. Ke4 Bxf2 3. Bxg4 Kg2 4. Bf3†. Or 1. .. fg† 2. Kxg4 Bxf2 3. Kf3 Kg1 4. Bg2. ii) 2. .. Kg1 3. Bg2 Kxg2 4. h8Q h1Q 5. Qa8† Kh2 6. Qxh1† Kxh1 7. h7 and so on. iii) 6. .. c5 7. b5 c4 8. g5. iv) 13. .. Bb4 14. f7 Bf8 15. Kf6 Kg2 16. Ke6 wins.

No. 1410 P. Perkonoja  
(Finland)  
19th Place,  
2nd Team ('Friendship')  
Match, Studies Section, 1965-7



Win 6

No. 1411 S. Segenreich  
and M. Shorek  
(Israel)  
20th Place,  
2nd Team ('Friendship')  
Match, Studies Section, 1965-7



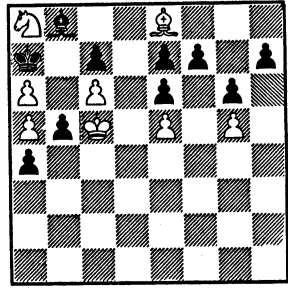
Win 11

No. 1410: P. Perkonoja. 1. Bf2/i Kf8/ii 2. Bc5† Kg8 3. Se7† Kf8 4. Sc8† Kg8 5. Sd6 g6 6. Se8 Rg7/iii 7. Sxf6 mate. i) 1. Be1? g6 2. Bb4 gf 3. Bc5 f4 4. Sb4 f5 5. Sd5 f6† with at least a draw. 1. Bg3? Kf8 2. Bd6† Kg8 3. Se7† Kf8 4. Sc8† Kg8 5. Bc5 g6 6. Sd6 Rg7 7. Se8 Rhh7. ii) 1. .. 0-0 is clearly illegal, the original bRh8 having moved at least once. 1. .. g6 2. Bc5 gf 3. Sb4 f4 4. Sd5 and 5. Sf6 mate, or here 3. .. Rg8 4. Sd5 Rg6 5. Kc8 and 6. Sc7 mate. iii) 6. .. gh 7. Sxf6† Kg7 8. Sxh5† Kg8 9. f6 Rg7 10. fg wins. Or 6. .. gf 7. Be7 f4 8. Bxf6 Kf8 9. Kd7 wins.

No. 1411: S. Segenreich and M. Shorek. A nice variation on illegal castling, linked here with proving that W's last move, prior to the move putting him in check, was e2-e4, to which the reply was .. bPf4xe3†. Incidentally, on B1's previous move the same P disclosed check from the same piece, something one would have thought impossible! Anyway, wBd1 is promoted, and in the process bK moved, for the usual reason. 1. Kd4/i Rd8† 2. Kc5 Rd6/ii 3. h8Q†/iii Ke7/iv 4. Qh4† Sf6/v 5. Qxf6† gf 6. Qxf6† Rxf6 7. Sxf6 wins. i) 1. Ke2? Sc1†. ii) 2. .. Bxh7 3. Qxg4. iii) 3. Sxg7†? Ke7. iv) 3. .. Kd7 4. Qxg4† f5 5. Qxg7†. v) 4. .. f6 5. Qxg7†.

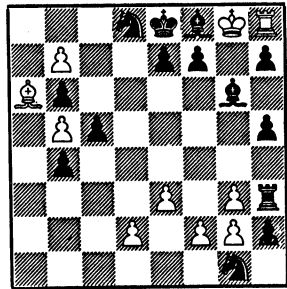
No. 1412: E. Paoli. 1. a5xb6† Kxa8/i 2. Bxf7/ii cb† 3. Kxb6 Ba7†/iii 4. Kc7/iv Bd4 5. Kd8 Bxe5 6. c7 wins. i) 1. .. Kxa6 2. bc Bxc7 3. Sxc7†. Or 1. .. cb† 2. Sxb6 a3/v 3. Kb5 a2/vi 4. Sc8† Ka8 5. c7 Bxc7 6. Bc6† Kb8 7. a7†. ii) 2. b7†? Ka7 3. Bxf7 Kxa6 4. Bxe6 Ba7† 5. Kb4 Kb6. iii) 3. .. Bxe5 4. c7 Bxc7† 5. Kxc7 e5 6. Kb6. iv) 4. Kb5? Kb8 5. Bxe6 Bd4. v) 2. .. Bxe5 3. Kb5. Or 2. .. Bc7 3. Sxa4 Kxa6 4. Bxf7 Bxe5 5. Bxe6 Ka7 6. Sb6 Bf4 7. Sd5. vi) 3. .. Bc7 is not given and looks like a bust (AJR).

No. 1412 E. Paoli  
(Italy)  
21st Place,  
2nd Team ('Friendship')  
Match, Studies Section, 1965-7  
10



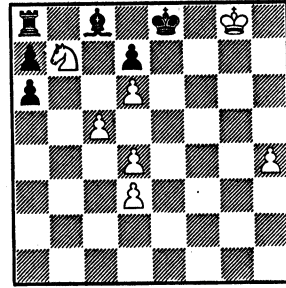
Win 8

No. 1414 B. Breider  
and O. Kaila  
(Finland)  
23rd Place,  
2nd Team ('Friendship')  
Match, Studies Section, 1965-7  
14



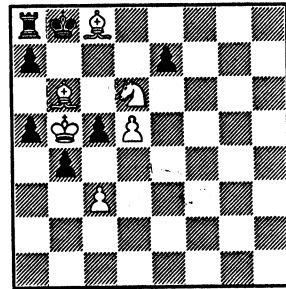
Win 10

No. 1413 C. Jonsson  
(Sweden)  
22nd Place,  
2nd Team ('Friendship')  
Match, Studies Section, 1965-7  
6



Win 7

No. 1415 E. Thiele  
(DDR)  
24th Place,  
2nd Team ('Friendship')  
Match, Studies Section, 1965-7  
7



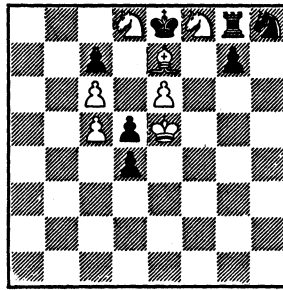
Win 6

No. 1413: C. Jonsson. 1. h5 Bxb7 2. h6/i Bd5† 3. Kg7 Bg8 4. Kxg8 Kd8 5. d5/ii Kc8 6. c6 dc 7. dc and only now can the wPh6 advance to promote and win. i) 2. Kg7? Rb8 3. h6 Be4 4. de Rb1. Castling by Bl is illegal, since bK or bR must have moved immediately prior to the diagram. ii) 5. h7? Kc8 6. h8Q Kb7† 7. Kg7 Rxh8 8. Kxh8 Kc6.

No. 1414: B. Breider and O. Kaila. Bl has no shortage of retractable moves, but W has few possibilities. Bl P's have taken all missing W men, as have wP's all missing Bl men. Therefore wPa2 promoted. Therefore .. a5xb4 was not Bl's last. Therefore to give wPb7 an 'uncapture' without getting behind Bl cP, Bl's last was .. c7-c5. 1. b5xc6/i Sxc6 2. Bb5 Kd8 3. Bxc6 Kc7 4. Kxf8 h1Q 5. Kxe7 Kxc6 6. b8Q Kb5 7. Qe5† wins. i) 1. b8Q? Be4 2. Bc8 Rh4 3. f3 (gh, h1Q:) 3. .. Sxf3 4. gf Bxf3 5. Kxh7 Be4† 6. Kg8 h1Q 7. Qc7 Rg4† 8. Bxg4 hg 9. Rxh1 Bxh1 10. Qxb6 e6 "etc."

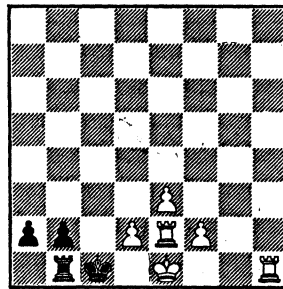
No. 1415: E. Thiele. 1. d5xc6/i ed/ii 2. Bb7 a6†/iii 3. Kc4 bc 4. Kxc3 wins. i) 1. Bd8? a6† 2. Kb6 Ra7 3. Bb7 Rxb7† 4. Sxb7 b3 ii) 1. .. ab 2. Kxb6 Ra7 3. Sb5. iii) 2. .. b3 3. Ka6 ab† 4. Kxb6 wins.

No. 1416 Spiros Bikos  
(Greece)  
25th Place,  
2nd Team ('Friendship')  
Match, Studies Section, 1965-7  
7



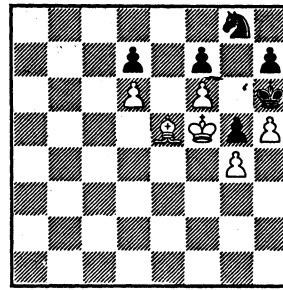
Win 7

No. 1418 E. M. Hassberg  
(U.S.A.)  
27th Place,  
2nd Team ('Friendship')  
Match, Studies Section, 1965-7  
4



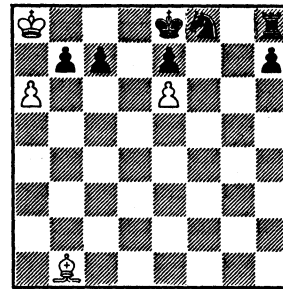
Win 6

No. 1417 G. A. Croes  
(Holland)  
26th Place,  
2nd Team ('Friendship')  
Match, Studies Section, 1965-7  
6



Win 6

No. 1419 P. Moutecidis  
(Greece)  
28th Place  
2nd Team ('Friendship')  
Match, Studies Section, 1965-7  
7



Win 4

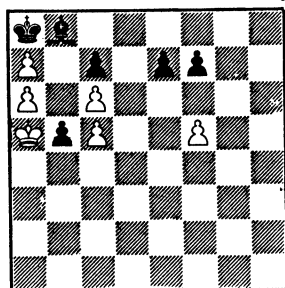
No. 1416: Spiros Bikos. 1. c5xd6/i cd†/ii 2. Kxd6 d3/iii 3. Bg5 d2/iv 4. Bxd2 Kxf8/v 5. Kd7 wins. i) Moves of bS not retractable because that would have meant wK in check with B1 to play. ii) 1. .. Rxf8 2. Bg5 cd† (Sg6†; Kxd4) 3. Kxd6 Sg6 (d3; c7) 4. c7 d3 5. c8Q wins. Or 1. .. d3 2. Bg5 Sf7† 3. ef† Kxf8 4. Be7 mate. iii) 2. .. Sg6 3. Sxg6 and 4. c7. iv) 3. .. Kxf8 4. Kd7 g6 5. Bh6† Rg7† 6. e7†. v) 4. .. Kxd8 5. Bg5† Kc8 6. e7 Sf7† 7. Kd5.

No. 1417: G. A. Croes. 1. h5xg6 hg†/i 2. Kf4 g5†/ii 3. Kf5 Kh7 4. Kxg5 Sh6 5. Kh5 Sg8 6. g5 Kh8 7. g6 fg† 8. Kxg6 Sh6 9. f7† wins. i) 1. .. fg† 2. Ke4, but not 2. Kf4? g5† 3. Kf5 Sxf6 with stalemate if taken either way. ii) 2. .. Kh7 3. g5 wins.

No. 1418: E. M. Hassberg. 1. d3/i a1Q/ii 2. Rd2 Qa8 3. e4 wins. i) Not castling, as wK had to move to let in wRe2. 1. d4? a1Q 2. Rd2 Qa6. ii) 1. .. a1B 2. Kf1 Kd1 3. f3 wins.

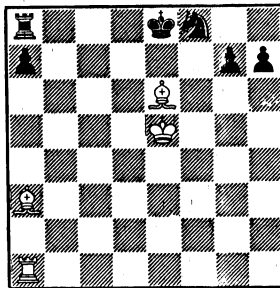
No. 1419: P. Moutecidis. No castling because bPb7 and bPc7 forced bK to move to let in wK. 1. ab Sd7/i 2. Bf5 Sb8/ii 3. Kxb8 Kf8 4. Kxc7 wins. i) 1. .. Sxe6 2. b8Q† Sd8 3. Qxc7 wins. ii) 2. .. Sb6† 3. Ka7.

No. 1420 W. Proskurowski  
(Poland)  
29th Place,  
2nd Team ('Friendship')  
Match, Studies Section, 1965-7  
6



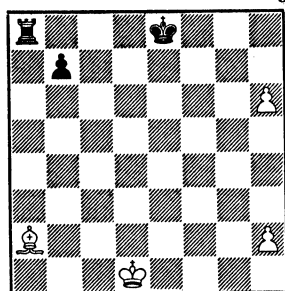
Draw 6

No. 1421 B. M. Skoulis  
(Greece)  
30th Place,  
2nd Team ('Friendship')  
Match, Studies Section, 1965-7  
6



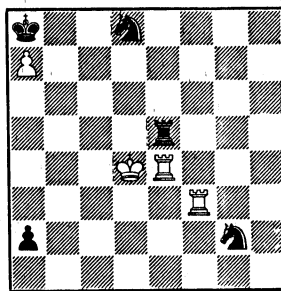
Win 4

No. 1422 E. Iwanow  
(Poland)  
31st Place,  
2nd Team ('Friendship')  
Match, Studies Section, 1965-7  
3



Win 4

No. 1423 P. Perkonoja  
1st Pr. TFS Tny 1969  
Award 6/70  
5



Draw 4

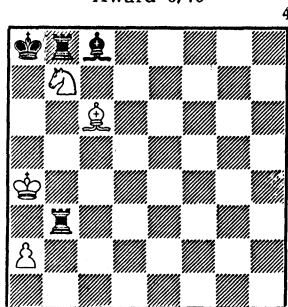
No. 1420: W. Proskurowski. 1. c5xb6/i cb†/ii 2. Kxb6 Bxa7† 3. Kc7 Bb8† 4. Kd7 e5 5. fe fe 6. Kxe6. i) 1. abQ†? Kxb8 2. Kxb5 Ka7 3. Ka5 e5 4. Kb5 f6. ii) 1. .. Bxa7 2. bc.

No. 1421: B. M. Skoulis. 1. Rf1 Sd7†/i 2. Kd6 Rd8/ii 3. Bf7† Kf8 4. Ke6† wins. i) 1. .. Sxe6 2. Kxe6 and B1 may not castle, his K or R have moved immediately prior to the diagram. 1. .. Sg6† 2. Kd6 a5/iii 3. Kc7 Ra7† 4. Kb6 Ra8 5. Bf7† Kd8 6. Rd1† Kc8 7. Be6†. ii) 2. .. Sb6 3. Kc7. iii) 2. .. Sf8 3. Rxf8†. Or 2. .. Rd8† 3. Kc7 Se7 and 4. Bf7†.

No. 1422: E. Iwanow. 1. h7 Ke7 2. Bg8 Ra1† 3. Kc2. Or here 2. .. Rd8† 3. Ke1.

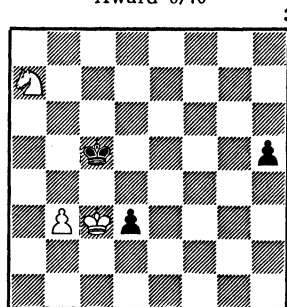
The Tidskrift för Schack informal tourney for studies published during 1969 was judged by Walter Korn, FIDE International Judge for studies. Quotes below are from the award, which was confirmed in TFS 9/70 when the 5th Prize was added.

No. 1424 Dr. A. Mandler  
2nd Pr. TFS Tny 1969  
Award 6/70



Draw 4  
I: as set  
II: no wPa2 and bRb3 to b5

No. 1425 A. J. Sobey  
3rd Pr. TFS Tny 1969  
Award 6/70



Win 3

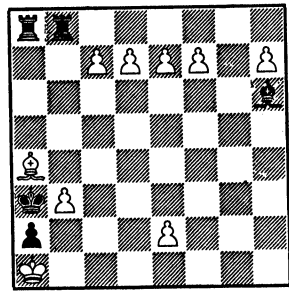
No. 1423: P. Perkonoja. 1. Rf1/i Sc6† 2. Kd3 Sb4† 3. Rxb4/ii Se1† 4. Kc4 (4. Kd2? Rd5†) a1Q/iii 5. Rf8† Kxa7 6. Rf7† Ka6 7. Rf6† Ka5 8. Rb5† Rxb5 9. Ra6† Kxa6 stalemate. i) 1. Ra3? Sc6† 2. Kd3 Sb4† 3. Kd4 Sc2† 4. Kxe5 Sxa3 wins. ii) 3. Kd4? Rxe4† 4. Kxe4 Sc2 wins. iii) Or 4. . . Re4† 5. Kb3 a1Q 6. Rf8† Kxa7 7. Ra8† Kxa8 8. Rb8† Kxb8 stalemate.

No. 1424: Dr. A. Mandler. I: 1. Sa5† R3b7 2. Ka3 Ka7 3. Bxb7 Bxb7 4. Sc6† etc. = II: 1. Sd6† R5b7 2. Ka5 Ka7 3. Bxb7 Bxb7 4. Sb5† etc. = "A wholly legitimate presentation in twin form of this chameleon theme".

No. 1425: A. J. Sobey. 1. b4†/i Kd5/ii 2. Kxd3 h4 3. Sb5 h3 4. Sc3† Ke5 5. Sd1(e4) h2 6. Sf2 Kf4 7. Ke2 Ke5 8. Kf3/iii Kd4 9. Kg2 Kc4 10. Sd3 wins. i) 1. Sc8? h4 2. Se7 h3 3. Sf5 h2 4. Sg3 fails to win after 4. . . d2 5. Kxd2 Kd4 6. Sh1 (6. Kc2 Ke5!) Ke4 7. Sf2 Kf3 8. Ke1 Ke3 =, as pointed out by R. Nillson. ii) 1. . . Kb6 2. Sc8† Kc7 3. Se7 h4 4. Sf5 (Simpler 4. Sd5† K- 5. Sf4 wins. WV) h3 5. Kxd3 h2 6. Sg3 Kc6 7. Kc4 Kd6 8. Kd4 Kc6 9. Sh1 Kb5 10. Kc3 Kc6 11. Kc4 Kd6 12 b5 wins. iii) No doubt best, but a dual win is 8. Ke3 Kf5 9. Sh1 Ke5 10. Kd3 Kf4 (10. . . Kd5 11. Sf2) 11. b5 Kf3 12. b6 Kg2 13. b7 etc., which seems rather serious as the exchange of roles between wK and wS is thereby rendered unnecessary. (WV)

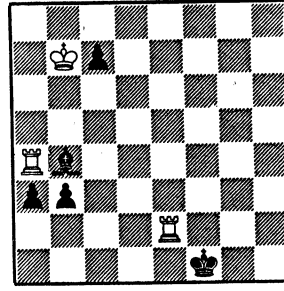
No. 1426: G. Nadareishvili. 1. e8S Rxe8/i 2. dxe8S/ii Rxe8 3. fxe8S Bd2/iii 4. c8R Be3 5. h8B wins. i) 1. . . Bg7† 2. Sxg7 Rf8 3. d8Q Rxd8 4. cxd8Q Rxd8 5. Bd7 Rf8 6. Be8 Rh8 7. Se6 wins. ii) 2. fxe8S? Bg7† 3. Sxg7 Rf8 wins. iii) 3. . . Be3 4. h8B wins. (TFS gives 4. . . Bd2 5. c8R but 5. Bb2† will do. WV) "Fascinating how the sequence of the underpromotions is rendered absolutely forced."

No. 1426 G. Nadareishvili  
4th Pr. TFS Tny 1969  
Award 6/70



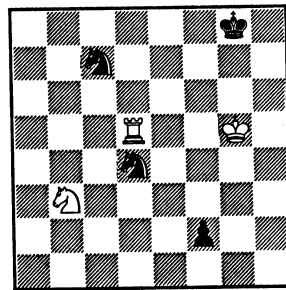
Win 9

No. 1427 H. Källström  
5th Pr. TFS Tny 1969  
Award 6/70 & 9/70



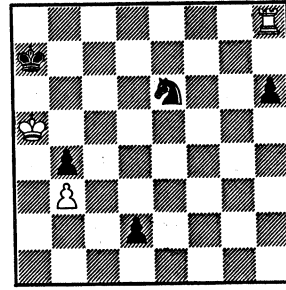
Win 3

No. 1428 V. Kivi  
1st Hon. Men. TFS Tny 1969  
Award 6/70



Draw 3

No. 1429 H. Lilja  
2nd Hon. Men. TFS Tny 1969  
Award 6/70



Draw 3

No. 1427: H. Källström. 1. Re3 b2 2. Rxb4 a2 3. Reb3/i a1Q 4. Rxb2 Qa5 5. Rb5 Qa4 6. R2b4 Qa3 7. Rb1† Ke2 8. R5b2† Kd3 9. Rb3† wins.  
i) 3. Rxb2? a1Q 4. Reb3 Qa4 =.

No. 1428: V. Kivi. 1. Rd8†/i Kf7/ii 2. Sd2 (2. Rxd4? Se6†) Sf3† 3. Kg4 Sxd2 4. Rd4 Se6 5. Rd5 Sg7 6. Rd4 Sh5 7. Kxh5 f1Q 8. Rf4† Qxf4 stalemate. i) 1. Sd2? Sxd5 2. Kg4 Sc3 3. Kg3(f4) Sd1 4. Sf1 Se2† 5. Kf3(g2) Sec3 6. S- Sd5 7. Sf1 Kf7 etc. wins. Or 1. Rf5? Sxf5 2. Sd2 Se3 3. Kf4 Sd5† 4. Kf3 Sd1 5. Sf1 Kf7 wins. ii) 1. . . Kg7 2. Rd7† Kf8 3. Sd2 Sf3† 4. Kf6 (Quicker 4. Kg6 directly. WV.) Se8† 5. Kg6 Se5† 6. Kf5 Sxd7 7. Ke4 =. "The bS gallop from c7 to h5 is really amusing".

No. 1429: H. Lilja. 1. Rh7† Kb8 2. Rd7 Sc5 3. Rd5 Kc7/i 4. Kxb4/ii Se4 5. Kc4/iii h5 6. b4 h4 7. Kb3 Kc6 8. Rd8/iv Kc7 9. Rd5 =.  
i) 3. . . Se4 4. Kb6 Kc8 5. Kc6 h5 6. Rxh5 d1Q 7. Rh8† Qd8 8. Rxd8† Kxd8 9. Kb5 =. ii) 4. Rxc5†? Kd6 5. Rc8 Kd7 wins. iii) 5. Ka3? Sc3 6. Rxd2 Sb1† wins. iv) 8. Rd3? h3 9. Kc2 h2 10. Rh3 d1Q† wins.  
"Orthodox and not entirely new, but elegantly executed."

---

The Chess Endgame Study Circle.

Annual subscription due each July (month vii): £ 1 (or \$ 3.00), includes EG 25-28, 29-32 etc. If renewing late (after November, month xi), please identify the EG-year (EG 25-28, or EG 29-32, etc.) of your payment. To avoid misunderstandings, renew EARLY !

How to subscribe:

1. Send money (cheques, dollar bills, International Money Orders) direct to A. J. Roycroft.

Or

2. Arrange for your Bank to transfer your subscription to the credit of: A. J. Roycroft Chess Account, National Westminster Bank Ltd., 21 Lombard St., London EC3P 3AR, England. (IMPORTANT: The paying-slip should quote your full name. On Bank Giro forms this should appear in the "Paid in By" section.)

Or

3. If you heard about EG through an agent in your country you may, if you prefer, pay direct to him.

New subscribers, donations, changes of address, ideas, special subscription arrangements (if your country's Exchange Control regulations prevent you subscribing directly):

A. J. Roycroft, 17 New Way Road, London England, NW9 6PL.

Editor: A. J. Roycroft.

**Spotlight** - all analytical contributions:

W. Veitch, 13 Roffes Lane, Caterham, Surrey, England CR3 5PU

"Anticipations", and anticipations service to tourney judges: J. R. Harman, 20 Oakfield Road, Stroud Green, London, England, N4 4NL.

To magazine and study editors: Please arrange to send the complimentary copy of your magazine, marked "EG Exchange", to: C. M. Bent, Black Latches, Inkpen Common, Newbury, Berkshire, England.

Next meeting of The Chess Endgame Study Circle: Friday 21st January 1972 at 101 Wigmore Street, London W1 (behind Selfridge's, in IBM building), 6.15p.m. (The date avoids the Hastings Congress, which extends until 16.1.72.)

---

Printed by: Drukkerij van Spijk - Postbox 210 - Venlo - Holland