

# George Teodoru 80

BY HAROLD VAN DER HEIJDEN

On September 8<sup>th</sup>, 2012, the well-known Romanian composer Dr. George Teodoru celebrated his 80<sup>th</sup> birthday. At a party organized by the Romanian Chess Federation, many famous Romanian chess friends attended. Teodoru received a diploma for his contribution to the development of chess composition in Romania and the “title of excellence”.

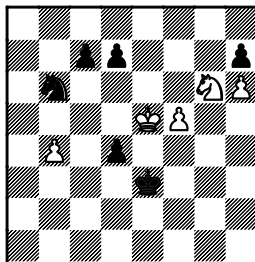
Teodoru’s chess composition career started in the 1950’s. At the age of 18 one of his studies won first prize in *Suomen Shakki* [HH knows of no younger first prize winner but hasn’t checked this – can anyone verify this?]. Teodoru was a pupil of Faragó and knew Korolkov and Petrović personally. After obtaining the title Romanian master for endgame studies, he became President of the Central Chess Composition Committee of Romania and board member of the Romanian Chess Federation. Together with A.F.I. Ianovcic and O. Costachel he founded *Buletin Problemistic* which appeared for 35 years. Teodoru was also a strong OTB player and regularly competed in the Romanian championship.

He moved to Germany in 1971 and is now living in Köln, for professional reasons (he holds the doctor title and is an international expert in concrete construction of bridges) he ceased all chess activities, but resumed chess composition in 2007 in an endgame study tourney commemorating his old friend Korolkov (see below). Six years ago he founded the composition magazine *Euxinus Pontus* together with S. Lamba.

We congratulate George Teodoru with this milestone and thank him for supplying photo material for publication in EG.

## H.1. G. Teodoru

5th Korolkov MT 2008

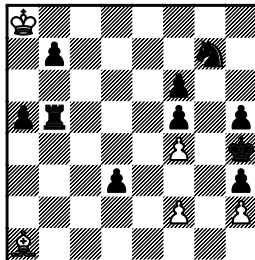


e5e3 0004.34 5/6 Win

**1.f6 Se4+ 2.Kd5 Sd6** (d3 3.f7 d2 4.f8Q d1Q+ 5.Kxc4 draws) **3.Se5 d3 4.Sxd3 Kxd3 5.b5 Sf7 6.b6 cxb6** stalemate (EG#17041).

## H.2. G. Teodoru

8th prize *The Problemist* 2010-2011  
*Dedicated to Korolkov & Nadareishvili*



a8h4 0313.37 5/10 Win

**1.f3 Se8 2.Bd4 Rb2** (only move to prevent immediate mate) **3.Bxb2 d2 4.Bd4 d1S 5.Ka7 a4 6.Kb8** (6.Kb6? a3 7.Bc5 Sd6 8.Bxd6 Se3 9.Bc5 Sd5+ 10.Kxb7 Sxf4) **6...b6 7.Ka7 a3 8.Kxb6 a2 9.Kc6 a1Q** (for esthetic reasons 9...a1S should be preferred, as White must capture any promoted piece!) **10.Bxa1 Sf2 11.Kd7 Sd3 12.Kxe8 Sxf4 13.Bxf6** mate. This reminds HH of the famous “tractor” study (HHdbIV#58905).



*Constantin Ionescu and Ion Dobronăuțeanu honour Dr. George Teodoru with his diploma.*



*IM Mircea Pavlov shows a photo album that Teodoru gave him in 1963 (!) as a souvenir of a simultaneous display Pavlov gave in INCERC (National Research Institute for Constructions).*



*Standing (left to right): GM Constantin Ionescu, GM Mihai Șubă, Marian Stere, Dr. I. Făcăoaru, Neculai Chivu, IM Bebe Botez, Prof. Cr. Palamar, Ion Dobronăuțeanu (president of Rumanian Chess Federation). Sitting: Dr. George Teodoru, Valeriu Petrovici (President of the Chess Composition Committee), and Prof. Nicolae Bădiță.*